

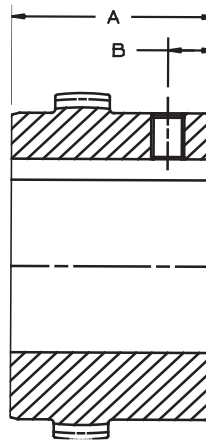
# Standard Inch Series Bores And Keyways

## Finished Straight Bores For Standard AGMA Class 1 Clearance Fit

Nominal Shaft Diameter	Bore Diameter	Keyway (Width x Depth)	Keyway Radius
1/2	.500 / .501	1/8 x 1/16	1/64
9/16	.5625 / .5635		
5/8	.625 / .626	3/16 x 3/32	1/64
3/4	.750 / .751		
13/16	.8125 / .8135		
7/8	.875 / .876		
15/16	.9375 / .9385	1/4 x 1/8	1/64
1	1.000 / 1.001		
1-1/16	1.0625 / 1.0635		
1-1/8	1.125 / 1.126		
1-3/16	1.1875 / 1.1885		
1-1/4	1.250 / 1.251		
1-5/16	1.3125 / 1.3135	5/16 x 5/32	1/32
1-3/8	1.375 / 1.376		
1-7/16	1.4375 / 1.4385	3/8 x 3/16	1/32
1-1/2	1.500 / 1.501		
1-5/8	1.625 / 1.626		
1-11/16	1.6875 / 1.6885		
1-3/4	1.750 / 1.751		
1-7/8	1.875 / 1.876	1/2 x 1/4	1/32
1-15/16	1.9375 / 1.9385		
2	2.000 / 2.001		
2-1/8	2.125 / 2.126		
2-3/16	2.1875 / 2.189		
2-1/4	2.250 / 2.2515		
2-3/8	2.375 / 2.3765	5/8 x 5/16	1/16
2-7/16	2.4375 / 2.439		
2-1/2	2.500 / 2.5015		
2-5/8	2.625 / 2.6265		
2-3/4	2.750 / 2.7515		
2-7/8	2.875 / 2.8765	3/4 x 3/8	1/16
2-15/16	2.9375 / 2.939		
3	3.000 / 3.0015		
3-1/8	3.125 / 3.1265		
3-3/16	3.1875 / 3.189		
3-1/4	3.250 / 3.2515		
3-3/8	3.375 / 3.3765	7/8 x 7/16	1/16
3-7/16	3.4375 / 3.439		
3-1/2	3.500 / 3.5015		
3-5/8	3.625 / 3.6265		
3-3/4	3.750 / 3.7515		
3-7/8	3.875 / 3.8765	1 x 1/2	1/16
4	4.000 / 4.0015		
4-1/4	4.250 / 4.2515		
4-3/8	4.375 / 4.377		
4-1/2	4.500 / 4.502		
4-3/4	4.750 / 4.752	1-1/4 x 5/8	1/8
5	5.000 / 5.002		
5-1/4	5.250 / 5.252		
5-3/8	5.375 / 5.377		

## Finished Straight Bores For Standard AGMA Interference Fit

Nominal Shaft Diameter Over to Including	Bore Dia. Equals Nominal Shaft Diameter minus	Bore Tolerance	Keyway (Width x Depth)	Keyway Radius
9/16 to 7/8	.001	+0.0005	3/16 x 3/32	1/64
7/8 to 1-1/4	.001	+0.0005	1/4 x 1/8	1/64
1-1/4 to 1-3/8	.001	+0.0005	5/16 x 5/32	1/32
1-3/8 to 1-1/2	.001	+0.0005	3/8 x 3/16	1/32
1-1/2 to 1-3/4	.002	+0.001		
1-3/4 to 2-1/4	.002	+0.001	1/2 x 1/4	1/32
2-1/4 to 2-3/4	.002	+0.001	5/8 x 5/16	1/16
2-3/4 to 3	.002	+0.001	3/4 x 3/8	1/16
3 to 3-1/4	.003	+0.0015		
3-1/4 to 3-3/4	.003	+0.0015	7/8 x 7/16	1/16
3-3/4 to 4	.003	+0.0015	1 x 1/2	1/16
4 to 4-1/2	.0035	+0.0015		
4-1/2 to 5	.0035	+0.0015	1-1/4 x 5/8	1/8
5 to 5-1/2	.004	+0.0015		
5-1/2 to 6	.004	+0.0015	1-1/2 x 3/4	1/8
6 to 6-1/2	.005	+0.002		
6-1/2 to 7	.005	+0.002	1-3/4 x 3/4	1/8
7 to 7-1/2	.0055	+0.002		
7-1/2 to 8	.0055	+0.002	2 x 3/4	1/8
8 to 9	.006	+0.002		
9 to 10	.0065	+0.002	2-1/2 x 7/8	1/8
10 to 11	.0075	+0.002		
11 to 12	.008	+0.002	3 x 1	3/16
12 to 13	.009	+0.0025		
13 to 14	.0095	+0.0025	3-1/2 x 1-1/4	3/16
14 to 15	.010	+0.0025		
15 to 16	.0105	+0.0025	4 x 1-1/2	(Note 3)
16 to 17	.011	+0.0025		
17 to 18	.0115	+0.0025		
18 to 19	.012	+0.0025	5 x 1-3/4	(Note 3)
19 to 20	.0125	+0.0025		



### Set Screw Sizes For Clearance Fit Bores

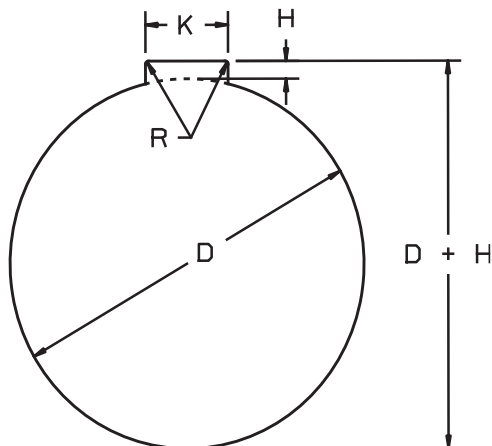
Hub Size	A	B	Set Screw
6 S	1.19	.38	1/4"-20 UNC
8 S	1.41	.38	
10 S	1.56	.38	
1 F	1.69	.38	
12 S	1.78	.50	3/8"-16 UNC
1 1/2 F or 15 S	1.94	.38	
2 F or 20 S	2.44	.50	
2 1/2 F or 25 S	3.03	.63	
3 F or 30 S	3.59	.75	1/2"-13 UNC
3 1/2 F or 35 S	4.19	.88	5/8"-11 UNC
4 F or 40 S	4.75	1.63	
4 1/2 F or 45 S	5.31	1.63	3/4"-10 UNC
5 F	6.03	2.06	
5 1/2 F	6.63	2.38	

**Notes:**

- 1) Unless specified by the customer:
  - Series S couplings supplied with clearance fit bores with set screws.
  - Series F couplings supplied with interference fit bores without set screws over the keyways.
  - Series EL couplings supplied with clearance fit bores with set screws.
- 2) Actual shaft fit will vary depending on actual shaft diameters.
- 3) Keyway fillet radius to be specified by customer.
- 4) All dimensions per AGMA 9002-A86 commercial standards. Non standard bores and keyways available upon request.

# Standard Metric Bores And Keyways

Bore Dia. (D) Over To/Incl.	Bore Tol.	Keyway		Fillet Radius (R)	Key Size (Ref)
		Width (K)	Depth (H)		
6	8	+0.015	2 -0.006	1.0	2 x 2
8	10	-0.000	3 -0.031	1.4	3 x 3
10	12	+0.018	4	1.8 +.1	4 x 4
12	17		5 -0.012	2.3 -0	5 x 5
17	18	-0.000	6 -0.042	2.8	6 x 6
18	22	+0.021	6	2.8	6 x 6
22	30	-0.000	8 -0.015	3.3	8 x 7
30	38	+0.025	10 -0.051	3.3	10 x 8
38	44	-0.000	12	3.3	12 x 8
44	50	+0.030	14 -0.018	3.8	14 x 9
50	58		16 -0.061	4.3	16 x 10
58	65	-0.000	18	4.4	18 x 11
65	75	+0.035	20	4.9 +.2	20 x 12
75	80		22 -0.022	5.4 -0	22 x 14
80	85	-0.000	22 -0.074	5.4	22 x 14
85	95	+0.035	25	5.4	25 x 14
95	110	-0.000	28	6.4	28 x 16
110	120	+0.040	32	7.4	32 x 18
120	130		32	7.4	32 x 18
130	150	-0.000	36 -0.026	8.4	36 x 20
150	170	+0.046	40 -0.088	9.4	40 x 22
170	180		45	10.4	45 x 25
180	200	-0.000	45	10.4	45 x 25
200	230	+0.052	50	11.4	50 x 28
230	250		56	12.4	56 x 32
250	260	-0.000	56	12.4 +.3	56 x 32
260	290	+0.057	63 -0.032	12.4 -0	63 x 32
290	315		70 -0.106	14.4	70 x 36
315	330	-0.000	70	14.4	70 x 36
330	380	+0.063	80	15.4	80 x 40
380	400		90 -0.037	17.4	90 x 45
400	440	-0.000	90 -0.124	17.4	90 x 45
440	500		100	19.5	100 x 50



Notes:

1. Bore tolerances per BS 4500 H7 fit.
2. Keyway width tolerances per BS 4235 P9 fit.
3. Keyway depth and fillet radius per BS 4235.
4. All dimensions are in millimeters.
5. Actual shaft fit will vary depending on actual shaft diameters.