

NEW PRODUCT PREVIEW

NEW SIZE

EPM 6 On/Off/ Proportional Control Electric Actuators

FOR BALL VALVES AND
BUTTERFLY VALVES UP TO 6"

KEY FEATURES

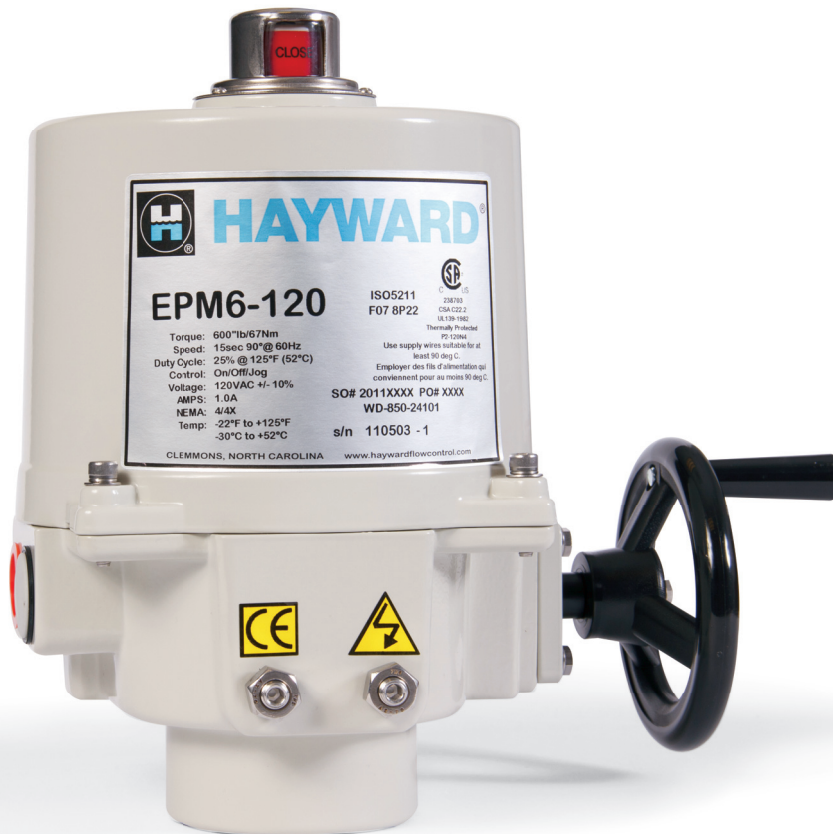
- Modular Design
- Superior Gear Design
- Data Logging and Diagnostics (Proportional Control Only)
- Manual Override with Handwheel
- 4 Limit Switches (2 Auxiliary)
- Internal Low Power Heater
- ISO5211 F07 8pt 22mm
- NEMA 4/4X Enclosure
- Position Indicator
- Clutchless Manual Override
- CSA Listed

OPTIONS

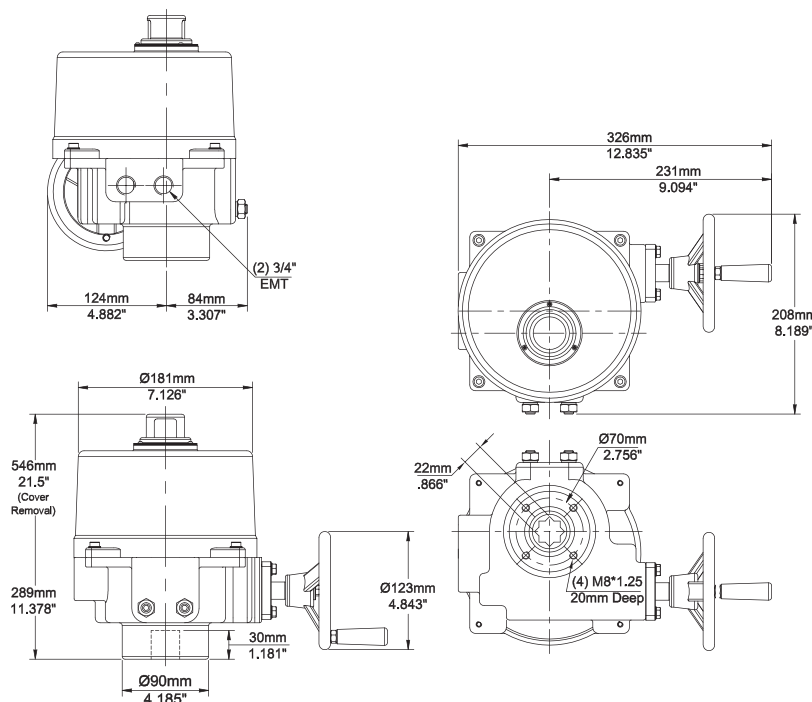
- Positioners
- Extended Duty Motors
- Feedback Potentiometer
- Local Control Station

SPECIFICATIONS

- OPERATION: Reversing
- CONDUIT SIZE: 3/4"
- DUTY CYCLE: 25-50% On/Off, 75% Proportional Control
- CYCLE TIMES: 15 Seconds
- ENCLOSURE: NEMA 4/4X
- VOLTAGES: 24 VAC/DC, 120 VAC, 230 VAC
- THERMAL OVERLOAD PROTECTION
- SELF BREAKING OVERRIDE
- HOUSING: Aluminum Alloy Dry Powder Coated



DIMENSIONAL DRAWINGS

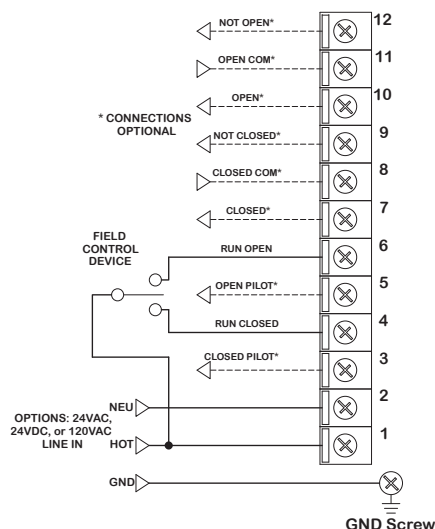


EPM 6 On/Off/Proportional Control Electric Actuators

FOR BALL VALVES AND BUTTERFLY VALVES UP TO 6"

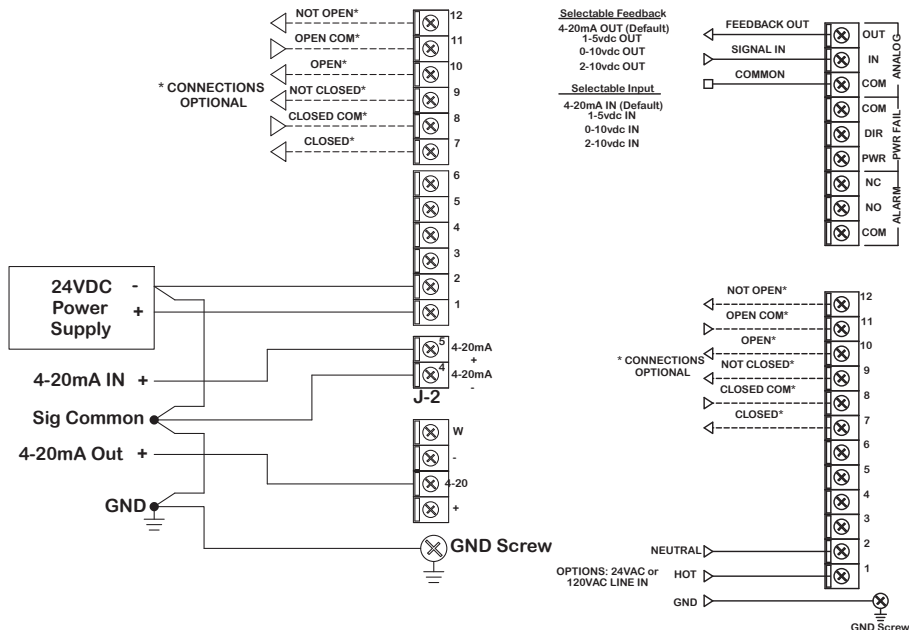
WIRING DIAGRAMS

ON/OFF JOG CONTROL



Please Note: For 24VDC Negative connects to terminal 2 and Positive to terminal 1.

PROPORTIONAL CONTROL



BALL VALVE SELECTION CHART*

SIZE in / DN	TRUE UNION BALL VALVE	THREE-WAY BALL VALVE
1/2 – 6 / 15 – 150	EPM 6	EPM 6

* Actuator size selections based on clean water at 70°F

ACTUATOR SPECIFICATIONS

	EPM 6
Torque Output (in.-lb / Nm)	600 / 67
Supply Voltage	24 VAC/DC 120 VAC 230 VAC
Duty Cycle	24 V – 75% 120 V and 230 V – 25% to 50% Proportional Control – 75%
Thermal Overload	Standard (275° F Thermal F Class)
Cycle Time - Secs. @ 90°	15
Auxiliary Limit Switch Rating	10A @ 250 VAC
Conduit Entry (2)	3/4" NPT
Enclosure	NEMA 4/4X
Enclosure Material	Aluminum Alloy Dry Powder Coated
Maximum Inrush Current	5.0A @ 24 VAC/DC 3.0A @ 120 VAC 1.5A @ 230 VAC
Running Current	3.0A @ 24 VAC/DC 1.0A @ 120 VAC 0.5A @ 230 VAC
Weight (lbs / kg)	25 / 11

BUTTERFLY VALVE SELECTION CHART*

SIZE in / DN	BUTTERFLY VALVE
1-1/2 – 6 / 40 – 150	EPM 6**

* Actuator size selections based on clean water at 70°F
** May vary by series. Consult factory to size correctly

Please Note: All EPM, EPS, and EPL Series Reversing Electric Actuators are considerably heavier than those typically used with plastic ball and butterfly valves, and they must be supported independently of the valves on which they are mounted. The weight must not be borne by the valve or piping. Please consult the factory if you need help with your particular application.



Hayward is a registered trademark of Hayward Industries, Inc.
© 2011 Hayward Industries, Inc.

NPP-0711B

20026SA072011KV

Contact Hayward Flow Control with questions: 1-888-429-4635 • Fax: 1-888-778-8410 • One Hayward Industrial Drive • Clemmons, NC 27012 • USA
Visit us at: www.haywardflowcontrol.com • E-mail: hflow@haywardnet.com