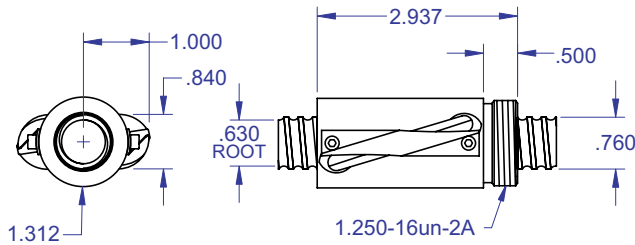


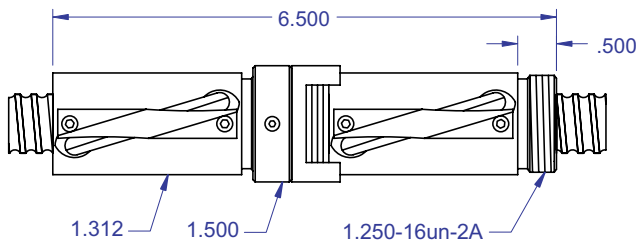
BALL SCREWS

Standard Ball Screw

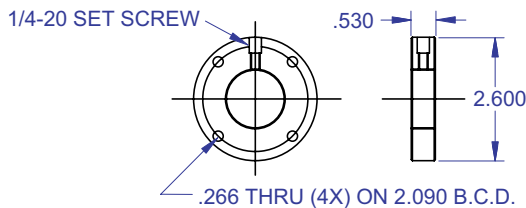


Ball bearing nominal diameter 5/32". Average ball quantity per nut is 150.

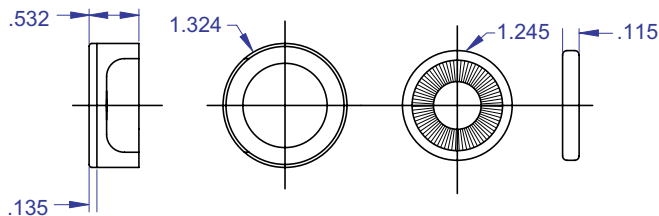
Preloaded Ball Screw



Mounting Flange



Wiper Kit



R37/R38

.750 diameter x .500 lead

STANDARD BALL SCREW

Ball Screw Part #	R-37-1	R-38-1*
Ball Nut Part #	R-37-2	R-38-2*
Dynamic Load (lbs)		
for 1,000,000 (in)	3,400	600
Max. Static Load (lbs)	21,000	3,900
Ballnut Weight (lbs)	0.68	0.68
Ballscrew Weight (lbs/ft)	1.35	1.35
*Stainless Steel		

PRELOADED BALL SCREW

Preload Screw Part #	RP-37-1	RP-38-1*
Preload Ballnut Part #	RP-37-2	RP-38-2*
Dynamic Load (lbs)**		
for 1,000,000 (in)	3,060	540
Max. Static Load (lbs)**	20,660	3,840
Recommended Preload	340	60
Maximum Preload	1,020	180
Ballnut Weight (lbs)	1.36	1.36
**Based on recommended Preload.		

ACCESSORIES

Mounting Flange Part #	R-37-3	R-38-3*
Wiper Kit Part #	R-37-4	R-38-4
Flange Wiper Cap Part#	R-37-4F	R-38-4F

The specifications and data in this publication are deemed to be accurate and reliable and are subject to change without notice.



Rockford Ball Screw

P: 815.961.7700 F: 815.961.7701 E: sales@rockfordballscrew.com

www.rockfordballscrew.com

It's Your Move.™



This Drawing is the Property of Rockford Ball Screw. It contains confidential, proprietary information that is Rockford Ball Screw property. Do not disclose to or duplicate for others except as authorized by Rockford Ball Screw. © RBS and Rockford Linear Motion are registered trademarks of Rockford Ball Screw. All Rights Reserved.