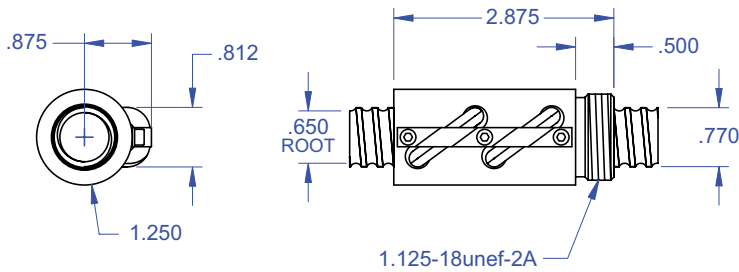


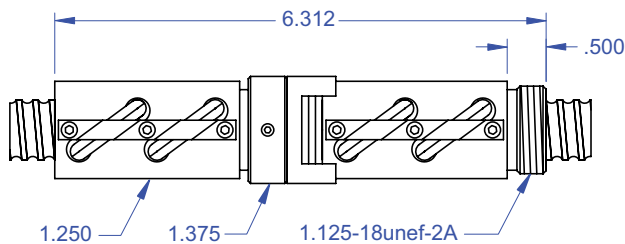
## BALL SCREWS

### Standard Ball Screw

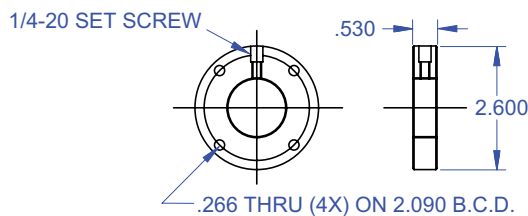


Ball bearing nominal diameter 1/8". Average ball quantity per nut is 168.

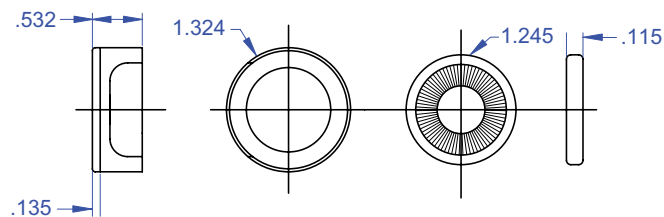
### Preloaded Ball Screw



### Mounting Flange



### Wiper Kit



## R34

### .750 diameter x .200 lead

#### STANDARD BALL SCREW

Ball Screw Part #	R-34-1
Ball Nut Part #	R-34-2
Dynamic Load (lbs)	
for 1,000,000 (in)	1,900
Max. Static Load (lbs)	17,800
Ballnut Weight (lbs)	0.53
Ballscrew Weight (lbs/ft)	1.35

#### PRELOADED BALL SCREW

Preload Screw Part #	RP-34-1
Preload Ballnut Part #	RP-34-2
Dynamic Load (lbs)**	
for 1,000,000 (in)	1,710
Max. Static Load (lbs)**	17,610
Recommended Preload	190
Maximum Preload	570
Ballnut Weight (lbs)	1.06

\*\*Based on recommended Preload.

#### ACCESSORIES

Mounting Flange Part #	R-34-3
Wiper Kit Part #	R-34-4
Flange Wiper Cap Part#	R-34-4F

*The specifications and data in this publication are deemed to be accurate and reliable and are subject to change without notice.*



Rockford Ball Screw

P: 815.961.7700 F: 815.961.7701 E: sales@rockfordballscrew.com

www.rockfordballscrew.com

**It's Your Move.™**



This Drawing is the Property of Rockford Ball Screw. It contains confidential, proprietary information that is Rockford Ball Screw property. Do not disclose to or duplicate for others except as authorized by Rockford Ball Screw. © RBS and Rockford Linear Motion are registered trademarks of Rockford Ball Screw. All Rights Reserved.