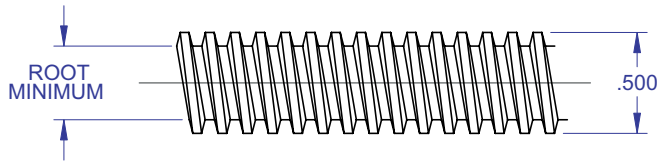
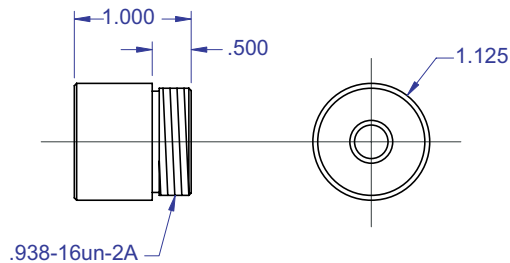


## ACME SCREWS

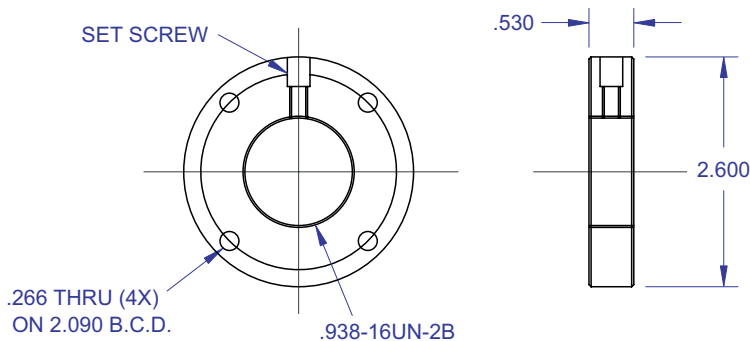
### Standard ACME Screw



### Standard ACME Nut



### Standard ACME Flange



# 1/2 INCH

## diameter

#### DIMENSIONAL SPECIFICATIONS

|                    |        |        |
|--------------------|--------|--------|
| Screw Size         | 1/2-8  | 1/2-8  |
| # of Starts        | 1      | 2      |
| Lead               | 0.125  | 0.250  |
| Threads Per Inch   | 8      | 8      |
| Min. Root Diameter | 0.332  | 0.332  |
| Weight (lbs/ft)    | 0.380  | 0.380  |
| Screw Material     | #304SS | #304SS |
| Nut Material       | #660   | #660   |
|                    | Bronze | Bronze |

#### PERFORMANCE SPECIFICATIONS

|                                |       |       |
|--------------------------------|-------|-------|
| Dynamic Capacity (lbs)         | 1,250 | 1,250 |
| Static Capacity (lbs)          | 4,000 | 4,000 |
| Torque to raise 1 lb. (in-lbs) | 0.051 | 0.075 |
| Forward Driving Efficiency     | 31%   | 53%   |
| Thread Class                   | 2G    | 2G    |

#### PART NUMBERS

|        |           |           |
|--------|-----------|-----------|
| Screw  | A105008-1 | A205008-1 |
| Nut    | A105008-2 | A205008-2 |
| Flange | A105008-3 | A205008-3 |

*The specifications and data in this publication are deemed to be accurate and reliable and are subject to change without notice.*



**Rockford Ball Screw**  
P: 815.961.7700 F: 815.961.7701 E: sales@rockfordballscrew.com  
[www.rockfordballscrew.com](http://www.rockfordballscrew.com)

**It's Your Move.™**