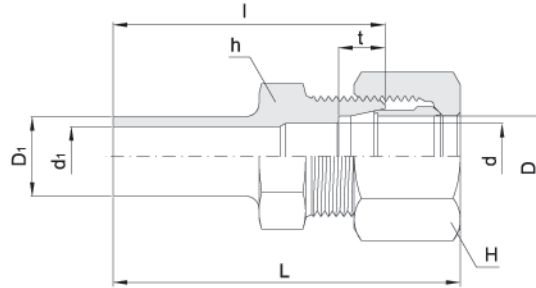


Reducer
BR



Basic Part Number	Tube O.D		*d	*d ₁	Width across flat		t	l	Approx L
	D	D ₁			h	H			
BR10PEX10	10	10	8	8	17	19	7.0	40.0	51.5
BR12PEX10	10	12	8	8	17	19	7.0	41.0	52.5
BR12PEX12	12	12	10	9	19	22	7.0	41.0	52.5
BR12PEX25	25	12	20	9	36	41	10.0	47.0	60.5
BR14PEX12-C	12	14	10	10	19	22	7.0	41.0	52.5
BR19PEX12	12	19	10	16	22	22	7.0	39.5	50.5
BR19PEX20	20	19	17	16	30	36	8.0	43.5	56.0
BR23PEX15	15	23	12	20	25	27	7.5	43.5	56.0
BR23PEX20	20	23	17	20	30	36	8.0	43.5	56.0
BR23PEX25	25	23	22	20	36	41	10.0	43.5	57.0
BR25PEX18	18	25	15	22	27	32	8.0	53.0	65.5
BR29PEX15	15	29	12	26	30	27	7.5	43.5	56.0
BR29PEX20	20	29	17	26	30	36	8.0	43.5	56.0
BR29PEX25	25	29	20	26	36	41	10.0	44.5	58.0
BR29PEX30	30	29	27	26	41	46	10.0	45.5	60.0
BR29PEX35	35	29	32	26	46	55	11.0	60.0	77.5
BR30PEX18	18	30	15	27	32	32	8.0	54.0	66.5
BR35PEX20	20	35	17	32	36	36	8.0	60.0	72.5
BR35PEX22	22	35	19	32	36	36	9.0	60.0	72.5
BR35PEX25	25	35	22	32	36	41	10.0	60.0	73.5
BR35PEX28	28	35	25	32	41	46	10.0	60.0	74.0
BR35PEX30	30	35	27	32	41	46	10.0	60.0	74.5
BR35PEX35	35	35	32	32	46	55	11.0	63.0	80.5
BR35PEX42	42	35	38	32	55	60	12.0	69.0	88.5
BR35PEX86	34	35	28	32	46	55	11.0	61.0	78.5
BR41PEX42	42	41	38	37	55	60	12.0	66.0	85.5
BR41PEX86	34	41	30	37	46	55	11.0	64.0	81.5
BR86PEX30-C	30	34	26	30	41	46	10.0	60.0	74.5

Tube Wall Thickness

- A = 1.0t
- B = 1.5t
- C = 2.0t

* Part 'd' can be changed according to buyer's tube specification.
Assembly instruction refers to the catalog number H-220TF.

Dimensions are reference only, subject to change.