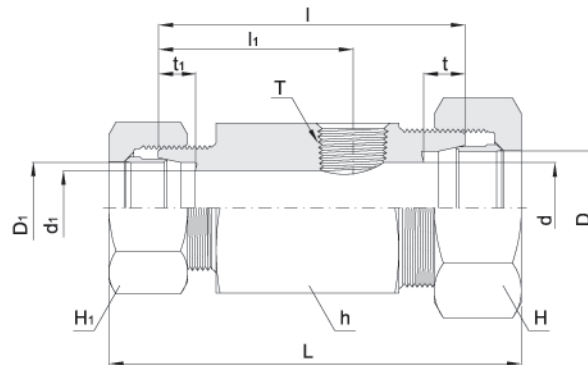


Tee Type Reducing Union

BUT-R



| Basic Part Number | Tube O.D | | (PT) T | *d | *d ₁ | Width across flat | | | t | t ₁ | l ₁ | l | Approx L |
|-------------------|----------|----------------|-----------|----|-----------------|-------------------|----|----------------|------|----------------|----------------|----|----------|
| | D | D ₁ | | | | h | H | H ₁ | | | | | |
| BUT08-03R | 8 | 8 | 3/8 | 6 | 6 | 36 | 17 | 17 | 7.0 | 7.0 | 45 | 68 | 89.0 |
| BUT10-08-03R | 10 | 8 | 3/8 | 8 | 6 | 36 | 19 | 17 | 7.0 | 7.0 | 45 | 68 | 90.0 |
| BUT10-03R | 10 | 10 | 3/8 | 8 | 8 | 36 | 19 | 19 | 7.0 | 7.0 | 45 | 68 | 91.0 |
| BUT12-08-03R | 12 | 8 | 3/8 | 10 | 6 | 36 | 22 | 17 | 7.0 | 7.0 | 45 | 68 | 90.0 |
| BUT12-10-03R | 12 | 10 | 3/8 | 10 | 8 | 36 | 22 | 19 | 7.0 | 7.0 | 45 | 68 | 91.0 |
| BUT12-03R | 12 | 12 | 3/8 | 10 | 10 | 36 | 22 | 22 | 7.0 | 7.0 | 45 | 68 | 91.0 |
| BUT15-10-03R | 15 | 10 | 3/8 | 13 | 8 | 36 | 27 | 19 | 7.5 | 7.0 | 45 | 70 | 94.0 |
| BUT15-12-03R | 15 | 12 | 3/8 | 13 | 10 | 36 | 27 | 22 | 7.5 | 7.0 | 45 | 70 | 94.0 |
| BUT15-03R | 15 | 15 | 3/8 | 13 | 13 | 36 | 27 | 27 | 7.5 | 7.5 | 47 | 72 | 97.0 |
| BUT16-03R | 16 | 16 | 3/8 | 14 | 14 | 36 | 30 | 30 | 7.5 | 7.5 | 47 | 72 | 97.0 |
| BUT18-12-03R | 18 | 12 | 3/8 | 16 | 10 | 36 | 32 | 22 | 8.0 | 7.0 | 45 | 70 | 94.0 |
| BUT18-15-03R | 18 | 15 | 3/8 | 16 | 13 | 36 | 32 | 27 | 8.0 | 7.5 | 47 | 72 | 97.0 |
| BUT18-03R | 18 | 18 | 3/8 | 16 | 16 | 36 | 32 | 32 | 8.0 | 8.0 | 47 | 72 | 97.0 |
| BUT20-12-03R | 20 | 12 | 3/8 | 17 | 10 | 36 | 36 | 22 | 9.0 | 7.0 | 45 | 70 | 94.0 |
| BUT20-16-03R | 20 | 16 | 3/8 | 17 | 14 | 36 | 36 | 30 | 10.0 | 7.5 | 47 | 72 | 97.0 |
| BUT20-18-03R | 20 | 18 | 3/8 | 17 | 16 | 41 | 36 | 32 | 10.0 | 8.0 | 47 | 72 | 97.0 |
| BUT20-03R | 20 | 20 | 3/8 | 17 | 17 | 36 | 36 | 36 | 8.0 | 8.0 | 47 | 72 | 97.0 |
| BUT22-15-03R | 22 | 15 | 3/8 | 19 | 13 | 41 | 36 | 27 | 10.0 | 7.5 | 47 | 72 | 97.0 |
| BUT22-18-03R | 22 | 19 | 3/8 | 19 | 16 | 46 | 36 | 32 | 11.0 | 8.0 | 47 | 72 | 97.0 |
| BUT22-20-03R | 22 | 20 | 3/8 | 19 | 17 | 36 | 36 | 36 | 7.0 | 8.0 | 47 | 72 | 97.0 |
| BUT22-03R | 22 | 22 | 3/8 | 19 | 19 | 36 | 36 | 36 | 9.0 | 9.0 | 47 | 72 | 97.0 |
| BUT25-16-03R | 25 | 16 | 3/8 | 22 | 14 | 36 | 41 | 30 | 7.0 | 7.5 | 47 | 74 | 100.0 |
| BUT25-20-03R | 25 | 20 | 3/8 | 22 | 17 | 36 | 41 | 36 | 7.0 | 8.0 | 47 | 74 | 100.0 |
| BUT25-22-03R | 25 | 22 | 3/8 | 22 | 19 | 36 | 41 | 36 | 7.5 | 9.0 | 47 | 74 | 100.0 |
| BUT25-03R | 25 | 25 | 3/8 | 22 | 22 | 36 | 41 | 41 | 10.0 | 10.0 | 47 | 74 | 101.0 |
| BUT28-18-03R | 28 | 18 | 3/8 | 25 | 16 | 41 | 46 | 32 | 7.5 | 8.0 | 47 | 74 | 100.5 |
| BUT28-22-03R | 28 | 22 | 3/8 | 25 | 19 | 41 | 46 | 36 | 8.0 | 9.0 | 47 | 74 | 100.5 |
| BUT28-25-03R | 28 | 25 | 3/8 | 25 | 22 | 41 | 46 | 41 | 8.0 | 10.0 | 47 | 74 | 101.5 |
| BUT28-03R | 28 | 28 | 3/8 | 25 | 25 | 41 | 46 | 46 | 10.0 | 10.0 | 49 | 76 | 104.0 |
| BUT30-20-03R | 30 | 20 | 3/8 | 27 | 17 | 41 | 46 | 36 | 9.0 | 8.0 | 47 | 74 | 101.0 |
| BUT30-25-03R | 30 | 25 | 3/8 | 27 | 22 | 41 | 46 | 41 | 10.0 | 10.0 | 47 | 74 | 102.0 |
| BUT30-28-03R | 30 | 28 | 3/8 | 27 | 25 | 41 | 46 | 46 | 10.0 | 10.0 | 49 | 76 | 104.5 |
| BUT30-03R | 30 | 30 | 3/8 | 27 | 27 | 41 | 46 | 46 | 10.0 | 10.0 | 49 | 76 | 105.0 |
| BUT86-22-03R | 34 | 22 | 3/8 | 30 | 19 | 46 | 55 | 36 | 10.0 | 9.0 | 47 | 74 | 104.0 |
| BUT86-28-03R | 34 | 28 | 3/8 | 30 | 25 | 46 | 55 | 46 | 11.0 | 10.0 | 49 | 76 | 107.5 |
| BUT86-03R | 34 | 34 | 3/8 | 30 | 30 | 46 | 55 | 55 | 11.0 | 11.0 | 49 | 76 | 111.0 |

* Part 'd' can be changed according to buyer's tube specification. Assembly instruction refers to the catalog number H-220TF.

Dimensions are reference only, subject to change.