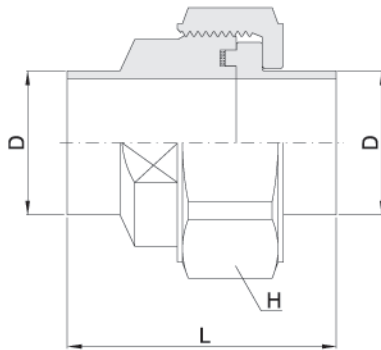
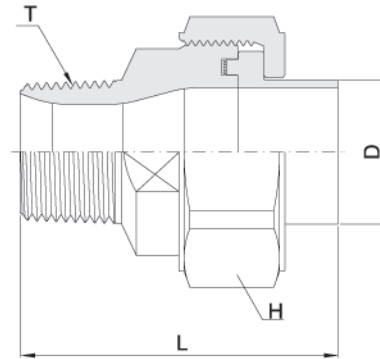


Buttweld to Buttweld PSUNBW



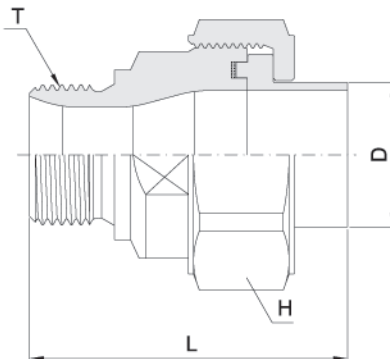
Basic Part Number	O.D	Width across flat	L
	D	HEX.	
PSUNBW19M-19M	19.0	34.9	48.5
PSUNBW23M-23M	23.0	41.0	50.0
PSUNBW27M-27M	27.2	46.0	50.8
PSUNBW29M-29M	29.0	46.0	51.0
PSUNBW34M-34M	34.0	50.0	52.0
PSUNBW41M-41M	41.0	60.0	62.0
PSUNBW53M-53M	53.0	75.0	65.0

Taper Thread to Buttweld PSUNBW



Basic Part Number	O.D	Width across flat	T (NPT)	L
	D	HEX.		
PSUNBW04N-19M	19.0	34.9	1/2	57.5
PSUNBW04N-23M	23.0	41.0	1/2	59.0
PSUNBW06N-27M	27.2	46.0	3/4	60.0
PSUNBW06N-29M	29.0	46.0	3/4	60.0
PSUNBW08N-34M	34.0	50.0	1	65.0
PSUNBW10N-41M	41.0	60.0	1 1/4	75.0
PSUNBW12N-53M	53.0	75.0	1 1/2	78.0

Parallel Thread to Buttweld PSUNBW



Basic Part Number	O.D	Width across flat	T (PF)	L
	D	HEX.		
PSUNBW04G-19M	19.0	34.9	1/2	57.5
PSUNBW04G-23M	23.0	41.0	1/2	59.0
PSUNBW06G-27M	27.2	46.0	3/4	60.0
PSUNBW06G-29M	29.0	46.0	3/4	60.0
PSUNBW08G-34M	34.0	50.0	1	65.0
PSUNBW10G-41M	41.0	60.0	1 1/4	75.0
PSUNBW12G-53M	53.0	75.0	1 1/2	78.0

Packing PSBWG



Basic Part Number	d	D	L
PSBWG20M-25M	20	25	1.5
PSBWG31M-25M	25	31	1.5
PSBWG35M-29M	29	35	1.5
PSBWG38M-32M	32	38	1.5
PSBWG49M-43M	43	49	1.5
PSBWG62M-56M	56	62	1.5
PSUNBW53M-53M	53	75	65.0

Dimensions are reference only, subject to change.