

Small 2- and 3-Way Solenoid Valves

A15 Series, 15mm Pilot Valves

Humphrey[®]

Humphrey A15 Series Pilot Valves are perfect for equipment or device makers requiring electrically controlled pneumatic signals in limited spaces. Available in Normally Closed or Normally Open configurations with lead wires or Mini-DIN electrical entry in 12VDC or 24VDC. These subbase mount, direct-acting valves have a life expectancy up to 50 million cycles.

15 millimeters in width, A15 valves feature fluorocarbon seals and an encapsulated coil affixed to a molded valve body made of PPS. Subbase seal is retained within the valve body. Solenoid operator draws just 2.5 watts, delivering 85 SLPM flow to operate high flow work valves. Customized flow/power consumption requirements are possible. Inquire with factory for availability.

FEATURES

- Compact 15mm wide valve body
- Low power consumption: 2.5 watts
- Excellent flow: 0.05 Cv
- Subbase, Manifold Mount
- Non-locking, recessed manual override (std)
- RoHS compliant

APPLICATIONS

- Mount directly to larger pilot operated work or process valves.
- Mount remotely (i.e. inside panel) and pilot operate work valves located near actuator or in harsh or dangerous environments.



Pilot Valve Family



How to Order

A15 Series, 15mm Pilot Valves

A15	10	39	12VDC
MODEL	TYPE 10 - Normally Closed 11 - Normally Open	ELECTRICAL ENTRY 38 - Lead Wires 39 - 9mm Mini-DIN	VOLTAGE 12VDC 24VDC

ORDER EXAMPLE

A15103912VDC

ACCESSORIES

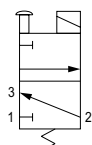
HS2 - DIN
HS2LED12VDC - DIN w/12VDC LED
HS2LED24VDC - DIN w/24VDC LED
HS2CLL - DIN w/2000mm Cable

Small Solenoid Valves

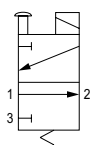
A15 Series, 15mm Pilot Valves

SPECIFICATIONS	A15
TYPE OF OPERATION	Direct-Acting
FUNCTION	2- and 3-Way, NC or NO
PIPING TYPE (OPTIONS)	Subbase, Manifold (Manifold mtg screws and gasket included. For 2-way, omit manifold's PORT 3.)
MEDIA	Air or Inert Gas
PRESSURE RANGE – PSI (BAR)	0 ~ 100 (6.9)
FLOW CAPACITY @ 100 PSI	85 SLPM
ESEOD* – IN (MM)	0.053 (1.35)
FLOW COEFFICIENT (Cv)	0.05
AMBIENT TEMPERATURE RANGE	14° to 122° F (-10° to 50°C)
LUBRICATION	Not Required
OPERATING SPEED (CPM)	2000
ELECTRICAL ENTRY	Perpendicular Plug-In w/19" lead wires; DIN: Micro Type C (9mm)
WEIGHT (OZ)	1.3
WETTED MATERIAL	Glass filled nylon, PPS, FKM, SST
POWER CONSUMPTION (WATTS)	2.5 MAX
VOLTAGE	12VDC, 24VDC
VOLTAGE RANGE	+/- 10%
OVERRIDE	Non-Locking Manual
COMPLIANCE	RoHS, REACH

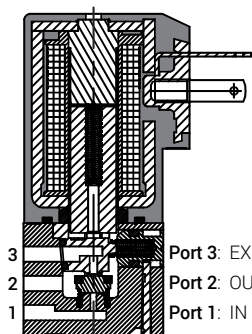
* ESEOD: Equivalent Sharp Edge Orifice Diameter



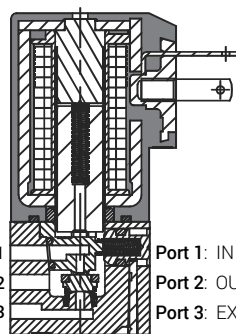
3/2 NC



3/2 NO

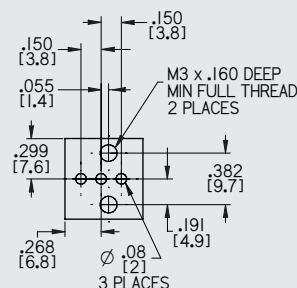
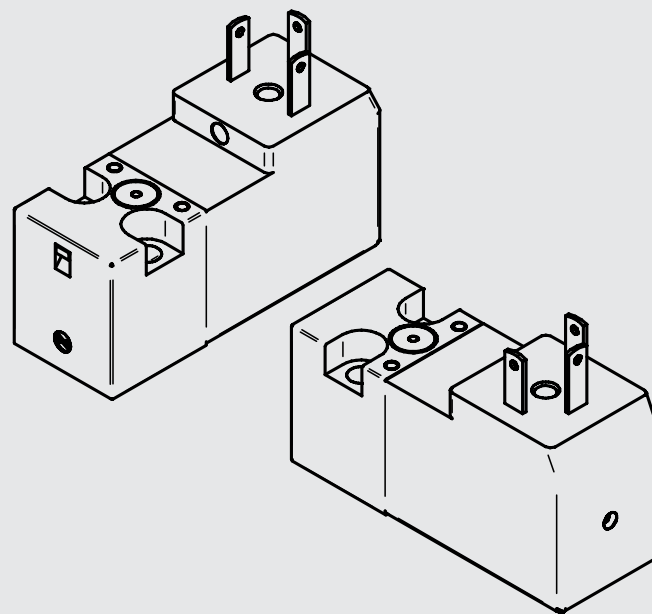
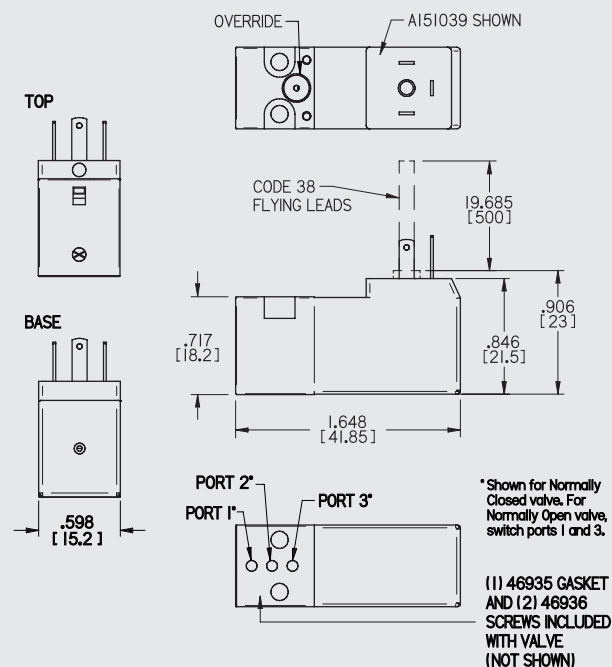


Port 3: EXHAUST
Port 2: OUTLET
Port 1: IN N/C



Port 1: IN N/O
Port 2: OUTLET
Port 3: EXHAUST

DIMENSIONAL DRAWINGS



FOOTPRINT

[] = mm

Certified: ISO 9001:2015

HUMPHREY-PRODUCTS.COM

A privately owned US company since 1901.

© 2023 Humphrey Products Company

Printed in U.S.A.

IDS15PV23

Humphrey Products Company

5070 East N Avenue

Kalamazoo, MI 49048 USA

P: 269.381.5500

F: 269.381.4113

Humphrey