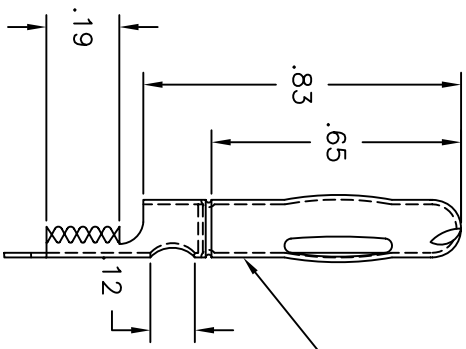
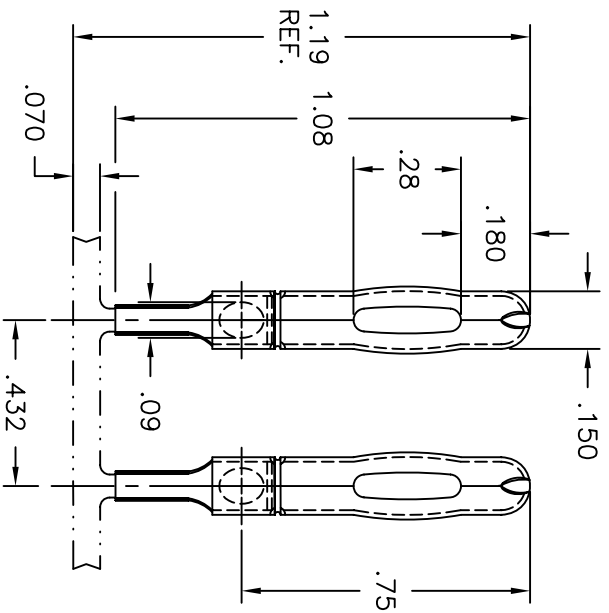
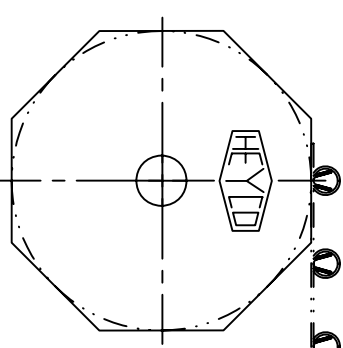
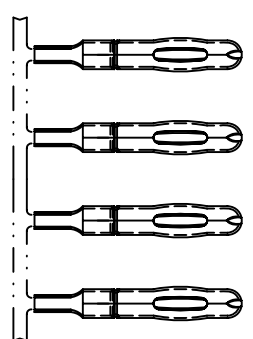


NOTE:

- 1.) Δ CRITICAL DIMENSION TO BE CHECKED AS PART OF THE IN-PROCESS INSPECTION (SPC).

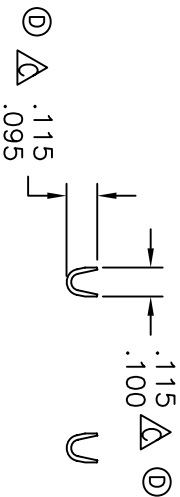


"HEYCO" LOGO

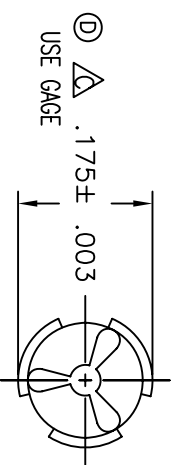


UNWINDING INFORMATION

FEED FROM LEFT TO RIGHT
CRIMP IN FRONT & UPRIGHT



VIEW: CRIMPS



VIEW: BARREL END
SCALE: 4=1

TOLERANCE UNLESS OTHERWISE SPECIFIED: .XX ± 0.015 .XXX ± 0.005 ANGULAR ± 1.0 °

MATERIAL:	BRASS	DESCRIPTION: CATALOG DRAWING	8032-001	PART No.
FINISH:		DESCRIPTION: CATALOG DRAWING	VE MED PIN	8032
THICKNESS:	.012	DESCRIPTION: CATALOG DRAWING	WIRE RANGE: 26-22 AWG	REV.: 6
		DESCRIPTION: CATALOG DRAWING	WIRE STRIP LENGTH:	



HEYCO PRODUCTS, INC.
TOMS RIVER, NEW JERSEY

HEYCO PRODUCTS, INC. claims proprietary rights to the material disclosed herein. This drawing and/or technical information is the property of HEYCO PRODUCTS, INC. It may not be reproduced or described or shown to others without written permission from HEYCO PRODUCTS, INC.

TOOLING: UNIV. DIE-A011, PUNCH-C143, ANVIL-C147
DIE BASE: , PUNCH- , ANVIL-
CUSTOM- , PUNCH- , ANVIL-