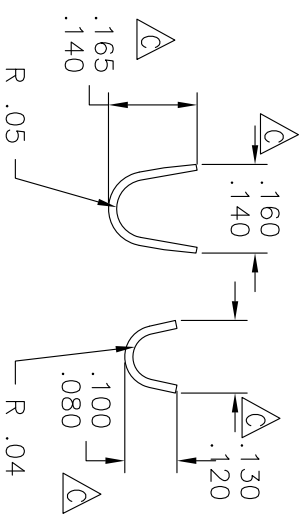
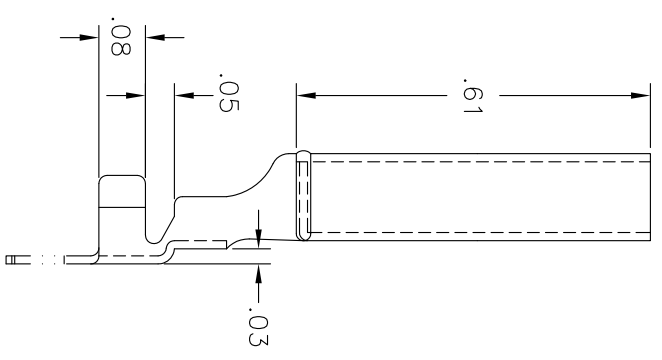
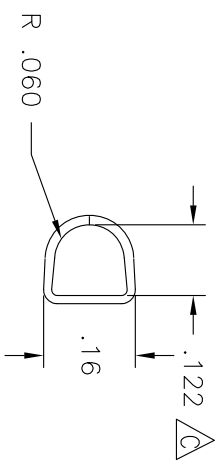
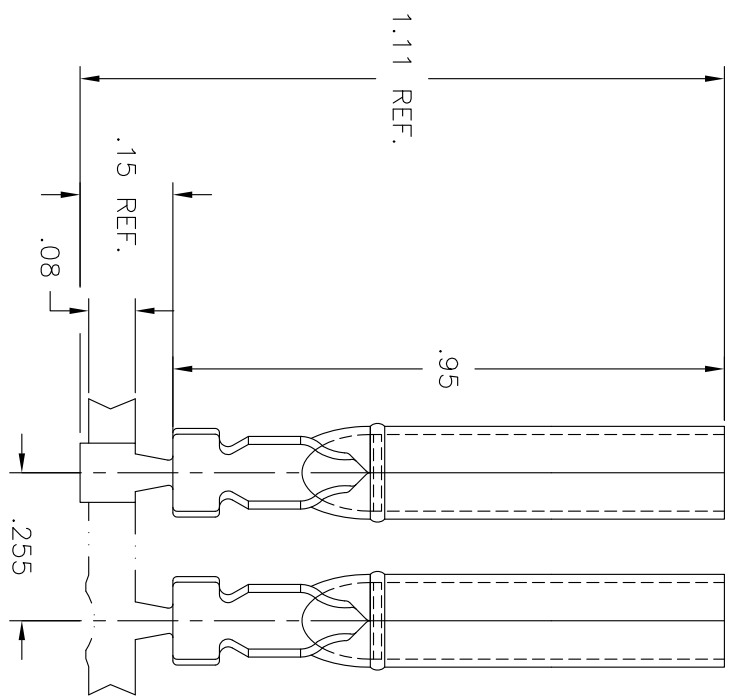
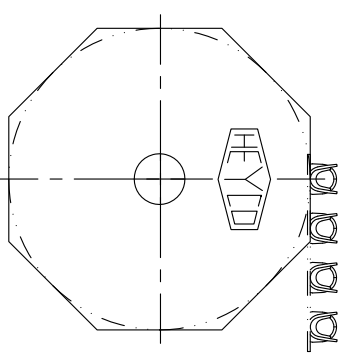
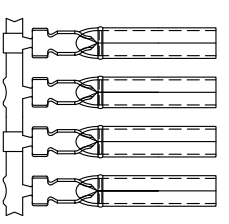


CRITICAL DIMENSION: TO BE CHECKED AS PART OF IN-PROCESS INSPECTION WITH STATISTICAL METHODS (SPC).



VIEW:
INSULATION
CRIMP

VIEW:
WIRE
CRIMP



UNWINDING INFORMATION
FEED FROM LEFT TO RIGHT
CRIMP IN FRONT & UPRIGHT

HEYCO
 HEYCO PRODUCTS, INC.
 TOMS RIVER, NEW JERSEY
 (732) 286-4336 FAX (732) 244-8843

PART DRAWING

TOLERANCES +/-: .XX=.01 .XXX=.005 ANG.=2°	FINISH:
MATL.: BRASS	WIRE STRIP LENGTH: .19
THICK: .014	WIRE RANGE (AWG): 24 - 18, MAX. INS. Ø: 125
TOOLING: UNIV. DIE-A011, PUNCH-C026, ANVIL-C035	DIE BASE- , PUNCHES- , ANVILS-
DRAWN: SH	REVISED: MEG
DATE: 2-25-94	DATE: 01/02/02
APPROVED:	

1330-E-10-L/R

DESCRIPTION

7359	7359-001	D
PART NUMBER	CATALOG NUMBER	REVISION