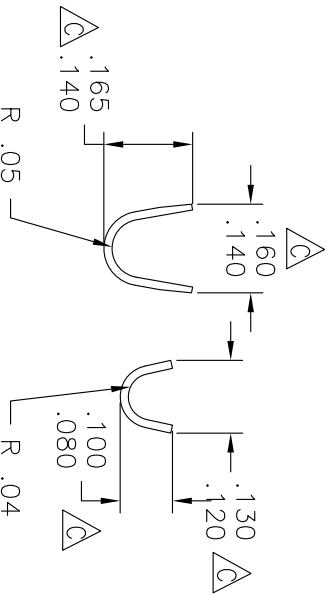
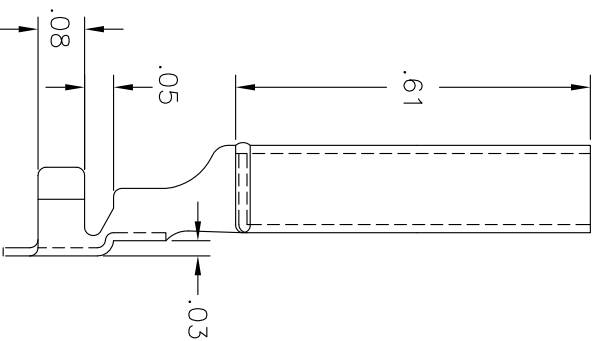
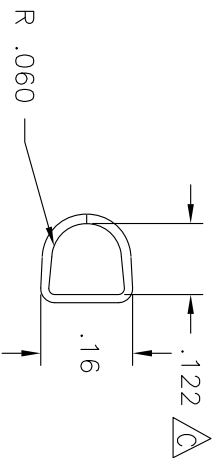
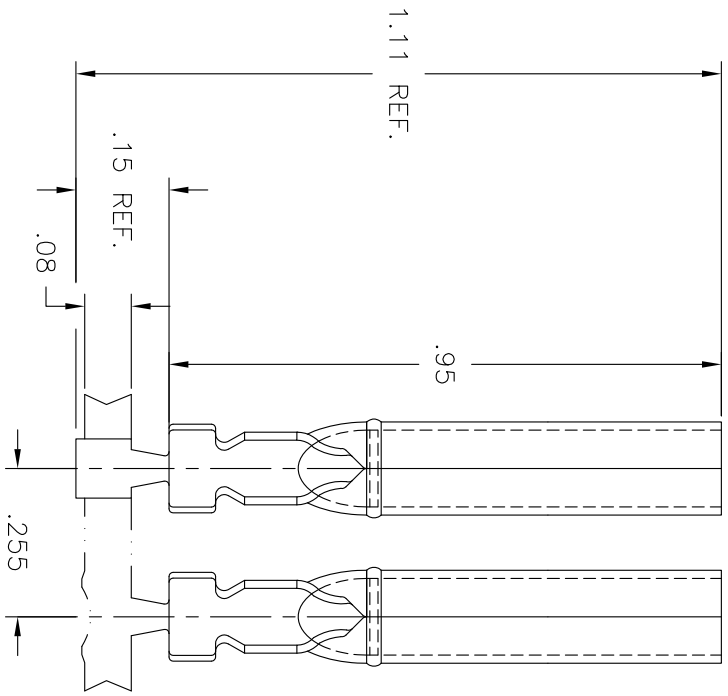
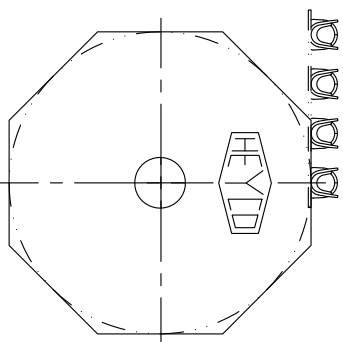
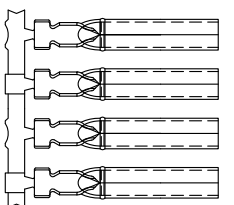


CRITICAL DIMENSION: TO BE CHECKED AS PART OF IN-PROCESS INSPECTION WITH STATISTICAL METHODS (SPC).



VIEW:  
INSULATION  
CRIMP

VIEW:  
WIRE  
CRIMP



UNWINDING INFORMATION

FEED FROM RIGHT TO LEFT  
CRIMP IN FRONT & UPRIGHT

**HEYCO**  
 HEYCO PRODUCTS, INC.  
 TOMS RIVER, NEW JERSEY  
 (732) 286-4336 FAX (732) 244-8843

PART DRAWING

TOLERANCES +/-: .XX=.01 .XXX=.005 ANG.=2°	FINISH:
MATL.: BRASS	WIRE STRIP LENGTH: .19
THICK: .014	WIRE RANGE (AWG): 24 - 18, MAX. INS. Ø.125
TOOLING: UNIV. DIE-A001, PUNCH-C026, ANVIL-C035	DIE BASE- , PUNCHES- , ANVILS-
DRAWN: SVH	REVISED: MEG
DATE: 2-28-94	DATE: 01/02/02
APPROVED:	DATE:

1330-E-10-R/L

DESCRIPTION

7358	7359-002	G
PART NUMBER	CATALOG NUMBER	REVISION