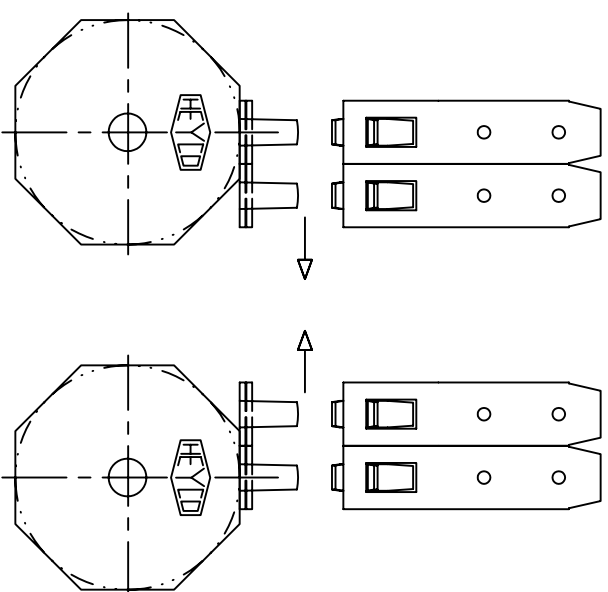


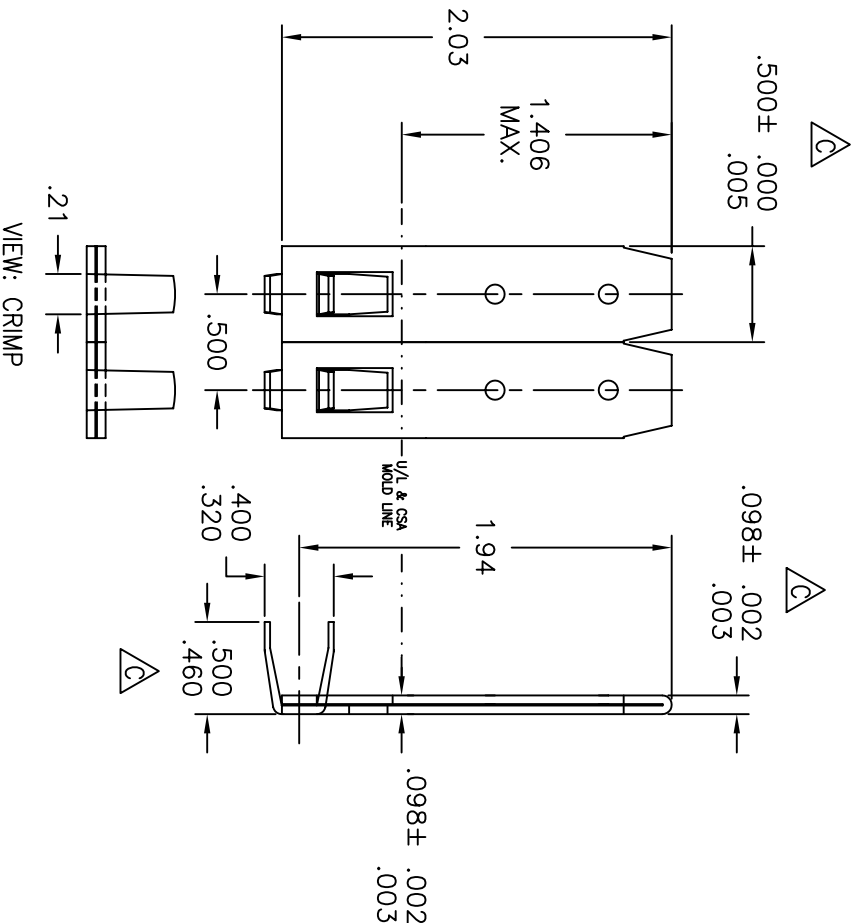
PACKED WITH 1 REEL OF EACH:

LEFT TO RIGHT FEED: CRIMP FRONT & UP
RIGHT TO LEFT FEED: CRIMP FRONT & UP



UNWINDING INFORMATION

FEED FROM LEFT TO RIGHT
FEED FROM RIGHT TO LEFT
BOTH: CRIMP IN FRONT & UPRIGHT.




VIEW: CRIMP

NOTE:

- 1.)  CRITICAL DIMENSION TO BE CHECKED AS PART OF THE IN-PROCESS INSPECTION (SPC).

TOOLING: UNIV. DIE-N/A, PUNCH-N/A, ANVIL-N/A
DIE BASE: 6004S0X5, PUNCH-OV23, ANVIL-OV22
INSERT 6 OR 8 INTO DIE BASE "X" DEPENDING ON AWG

TOLERANCE UNLESS OTHERWISE SPECIFIED: .XX ± 0.015 .XXX ± 0.005 ANGULAR ± 1.0 °

MATERIAL:			
BRASS			
FINISH:			
THICKNESS:			
.045			
		 HEYCO PRODUCTS, INC. TOMS RIVER, NEW JERSEY	
		HEYCO PRODUCTS, INC. claims proprietary rights to the material disclosed hereon. This drawing and/or technical information is the property of HEYCO PRODUCTS, INC. and may not be reproduced or described or shown to others without written permission from HEYCO PRODUCTS, INC.	
		DESCRIPTION: CATALOG DRAWING	
		6000-009	
		127	
		WIRE RANGE (AWG): 8-6	
		WIRE STRIP LENGTH: .31	
		PART No.	
		REV.: C	