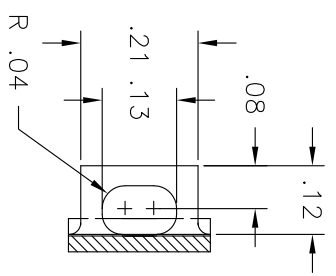


VIEW: CRIMPS

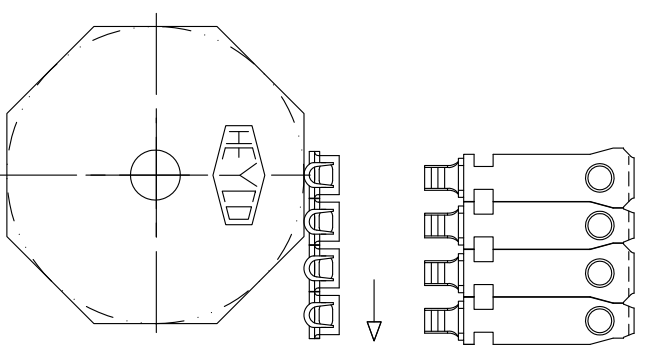



VIEW: KNEE

NOTES:

- 1.) REFER TO UL1681 PAGE 10, FIG. C1.5, AND CLAUSE 4.12.2 IN CSA C22.2 WHICH REFERENCES NEMA WD-16-1988.
- 2.)  CRITICAL DIMENSION TO BE CHECKED AS PART OF THE IN-PROCESS INSPECTION (SPC).

UNWINDING INFORMATION
 FEED FROM LEFT TO RIGHT.
 CRIMP IN FRONT & UPRIGHT.

HEYCO PRODUCTS, INC.
 TOMS RIVER, NEW JERSEY
 FAX (732) 244-8843
 (732) 286-1800

PART DRAWING

TOLERANCES +/-: .XX=.01 .XXX=.005 ANG.=2°		
MAT.: BRASS	FINISH:	
THICK: .028	WIRE STRIP LENGTH: .19	
WIRE RANGE (AWG): 18-14		
TOOLING: UNIV. DIE-A011, PUNCH-C234, ANVIL-C253 /DIE BASE-0504, PUNCHES-0D59(14), 0A66(18-16), ANVILS-0K85		
DRAWN: MS	REVISED: MEG	APPROVED:
DATE: 10-04-91	DATE: 6/8/01	DATE:

110-N-POL-L/R
 DESCRIPTION

5462	5400-701	D
PART NUMBER	CATALOG NUMBER	REVISION

