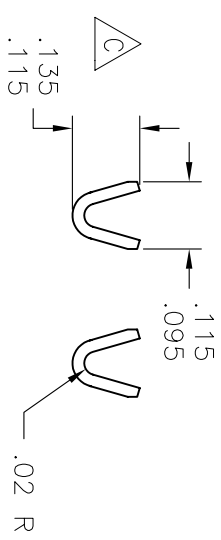
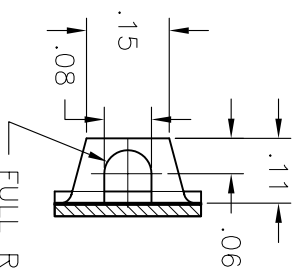


UNWINDING INFORMATION
 FEED FROM LEFT TO RIGHT
 CRIMP IN FRONT & UPRIGHT



VIEW: CRIMPS



VIEW: KNEE

NOTES:

- 1.) REFER TO UL1681 PAGE 10, FIG. C1.5, AND CLAUSE 4.12.2 IN CSA C22.2 WHICH REFERENCES NEMA WD-16-1988.
- 2.) CRITICAL DIMENSION TO BE CHECKED AS PART OF THE IN-PROCESS INSPECTION (SPC).

HEYCO PRODUCTS, INC.
 TOMS RIVER, NEW JERSEY
 (732) 286-4336 FAX (732) 244-8843

PART DRAWING

TOLERANCES +/-: .XX=.01 .XXX=.005 ANG.=2°	
MATL.: BRASS	FINISH:
THICK: .021	WIRE STRIP LENGTH: .21
WIRE RANGE (AWG): 22-20	
TOOLING: UNV. DIE-A011, PUNCH-C236, ANVL-C254 DIE BASE-0504, PUNCHES-0C73 (18), 0K18(14), ANVL-00A9 /BELDEN: PUNCH-C796, ANVL-C797	
DRAWN: SWH	REVISED: MEG
DATE: 9/30/97	DATE: 06/27/01
APPROVED:	DATE:

112-PAD-SP HOLE-L/R 20 GA.
 DESCRIPTION

5048	5048-001	E
PART NUMBER	CATALOG NUMBER	REVISION

