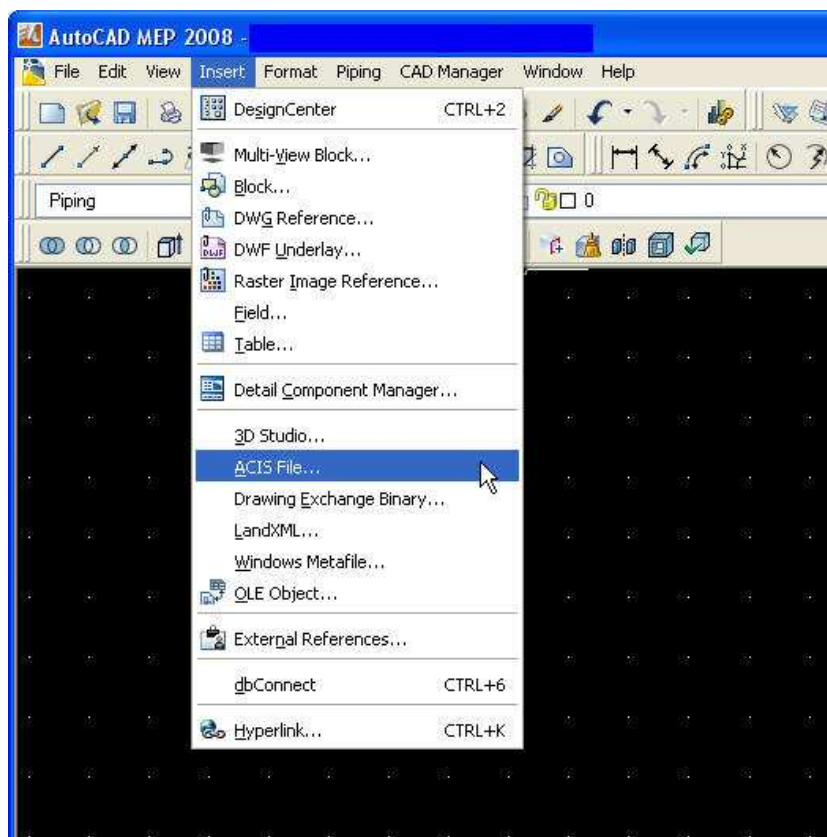


Inserting ACIS File into AutoCAD MEP

Note: All ACIS (.sat) files have measurements in Inch unit. Please make sure your AutoCAD MEP's unit is set to Inch before importing an ACIS file.

1. Activate **AutoCAD MEP** from the **Start Menu**.
2. On the **Main Tool Bar**, click on the **Insert** tab, and then click on the **ACIS File** selection. Please see picture below for location of the **Insert** tab and **ACIS File** option.
3. Select the desired ACIS file to open, and click on the **Open** button.



Inserting ACIS File into AutoCAD

Note: All ACIS (.sat) files have measurements in Inch unit. Please make sure your AutoCAD's unit is set to Inch before importing an ACIS file.

1. Activate **AutoCAD** from the **Start Menu**.
2. On the **Main Tool Bar**, click on the **Insert** tab, and then click on the **ACIS File** selection. Please see picture below for location of the **Insert** tab and **ACIS File** option.
3. Select the desired ACIS file to open, and click on the **Open** button.

