

Collar Clamp and Flangette Ball Bearings

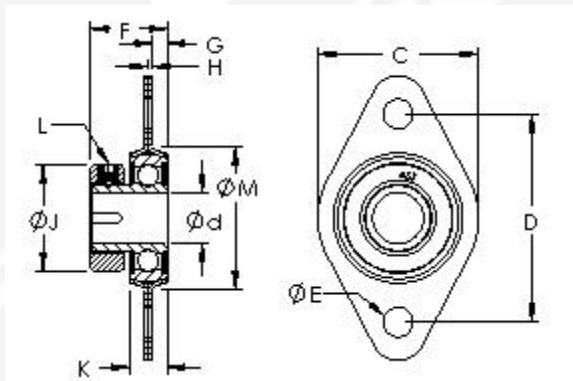
General Description

Available in shaft sizes from 3/16" – 1/2", collar clamp and flangette bearings are designed for relatively light loading, and easy installation. Utilizing a set screw for shaft retention, press fitting of the shaft into the bore is not required. All bearing are constructed of Chrome steel, have double seals, and are permanently lubricated.

Flangette bearings come with a pair of identical pressed steel housings for installation. The outer diameter of the bearing and the mating surfaces of the housings are spherically shaped, allowing for slight misalignments during installation. Once bolted in place, the units cannot accommodate misalignment. Collar clamp bearings are available with or without a snap ring installed to further facilitate mounting.

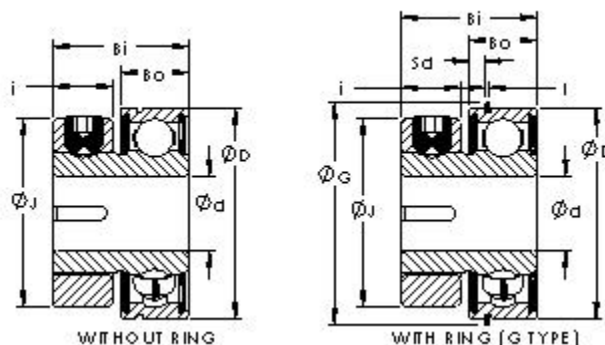
Nomenclature/Dimensions

The chart below shows the available Flangette bearing part numbers along with their associated dimensions:



Flangette Part Number	Bore Dia (d)	Flangette Width (C)	Flangette Length (A)	Flangette Assembly Height (F)	Dynamic Load Rating (Cr) (lbs)	Static Load Rating (Cor) (lbs)
S1PPB73ST	0.2500	0.8750	1.7800	0.4300	168	77
S3PPB15ST	0.3125	1.1900	2.0900	0.5620	575	305
S3PPB5ST	0.3750	1.1900	2.0900	0.5620	575	305
S5PPB2ST	0.5000	1.4400	2.3400	0.6250	885	505

The charts below show the standard part numbers and associated dimensions for each available Collar clamp bearing.



Bearing Part Number	Bearing Type	Bore Dia (d)	Outer Dia (D)	Outer Width (Bo)	Inner Width (Bi)	Dynamic Load Rating (Cr) (lbs)	Static Load Rating (Cor) (lbs)
S1PP7-3	no snap ring	0.2500	0.6250	0.1960	0.4219	168	77
S1PP7-4	no snap ring	0.1875	0.6250	0.1960	0.4219	168	77
S1PPG7-3	with snap ring	0.2500	0.6250	0.1960	0.4219	168	77
S1PPG7-4	with snap ring	0.1875	0.6250	0.1960	0.4219	168	77
S3PP16	no snap ring	0.3125	0.8750	0.2812	0.5625	575	305
S3PP4	no snap ring	0.3750	0.8750	0.2812	0.5625	575	305
S3PPG16	with snap ring	0.3125	0.8750	0.2812	0.5625	575	305
S3PPG4	with snap ring	0.3750	0.8750	0.2812	0.5625	575	305
S5PP2	no snap ring	0.5000	1.1250	0.3125	0.6250	885	505
S5PPG2	with snap ring	0.5000	1.1250	0.3125	0.6250	885	505

Tolerances

All tolerances of both collar clamp and flange bearings follow ABEC 1 designations with the exception of the bore diameter. Below is a chart with the associated tolerances:

Bore	Outer Diameter	Width
+0.0005" / -0.0000"	+0.0000" / -0.0004"	+0.000" / -0.005"

Mounting and Fitting

All collar clamp and flange bearings should be used in conjunction with shafts that have nominal bore size $+0.0000$ / -0.0005 diameter tolerances. This results in a $+0.001$ / -0.000 fit. The shaft is retained in place with the use of the included set screws provided with each bearing.

Standard bearing mounting and fitting practices should be used when mounting collar clamp bearings. A light press fit on the outer diameter of the bearing should be used when possible. To facilitate mounting, snap ring versions of collar clamp bearings are available to limit axial movement.

Flange bearing mounting is reduced to using correctly sized hardware for the associated mounting hole diameter.

