

Description

The AZ60A8 PWM servo drive is designed to drive brush-type DC motors at a high switching frequency. To increase system reliability and to reduce cabling costs, the drive is designed for direct integration into your PCB. The AZ60A8 is fully protected against over-voltage, under-voltage, over-current, over-heating and short-circuits. A single digital output indicates operating status. The drive interfaces with digital controllers that have analog $\pm 10V$ output. This servo drive requires only a single unregulated isolated DC power supply, and is fully RoHS (Reduction of Hazardous Substances) compliant.

See Part Numbering Information on last page of datasheet for additional ordering options.

Power Range

Peak Current	60 A
Continuous Current	30 A
Supply Voltage	10 - 80 VDC



Features

- ▲ High Power Density
- ▲ Compact Size
- ▲ Direct Board-to-Board Integration
- ▲ Lightweight
- ▲ High Switching Frequency
- ▲ Four Quadrant Regenerative Operation
- ▲ Wide Temperature Range
- ▲ High Performance Thermal Dissipation
- ▲ Differential Input Command
- ▲ Current Monitor Output
- ▲ Digital Fault Output Monitor
- ▲ 12VDC Operation

HARDWARE PROTECTION

- Over-Voltage
- Under-Voltage
- Over-Current
- Over-Temperature
- Short-circuit (phase-phase)
- Short-circuit (phase-ground)

INPUTS/OUTPUTS

- Digital Fault Output
- Digital Inhibit Input
- Analog Current Monitor
- Analog Command Input
- Analog Current Reference

MODES OF OPERATION

- Current

MOTORS SUPPORTED

- Single Phase (Brushed, Voice Coil, Inductive Load)

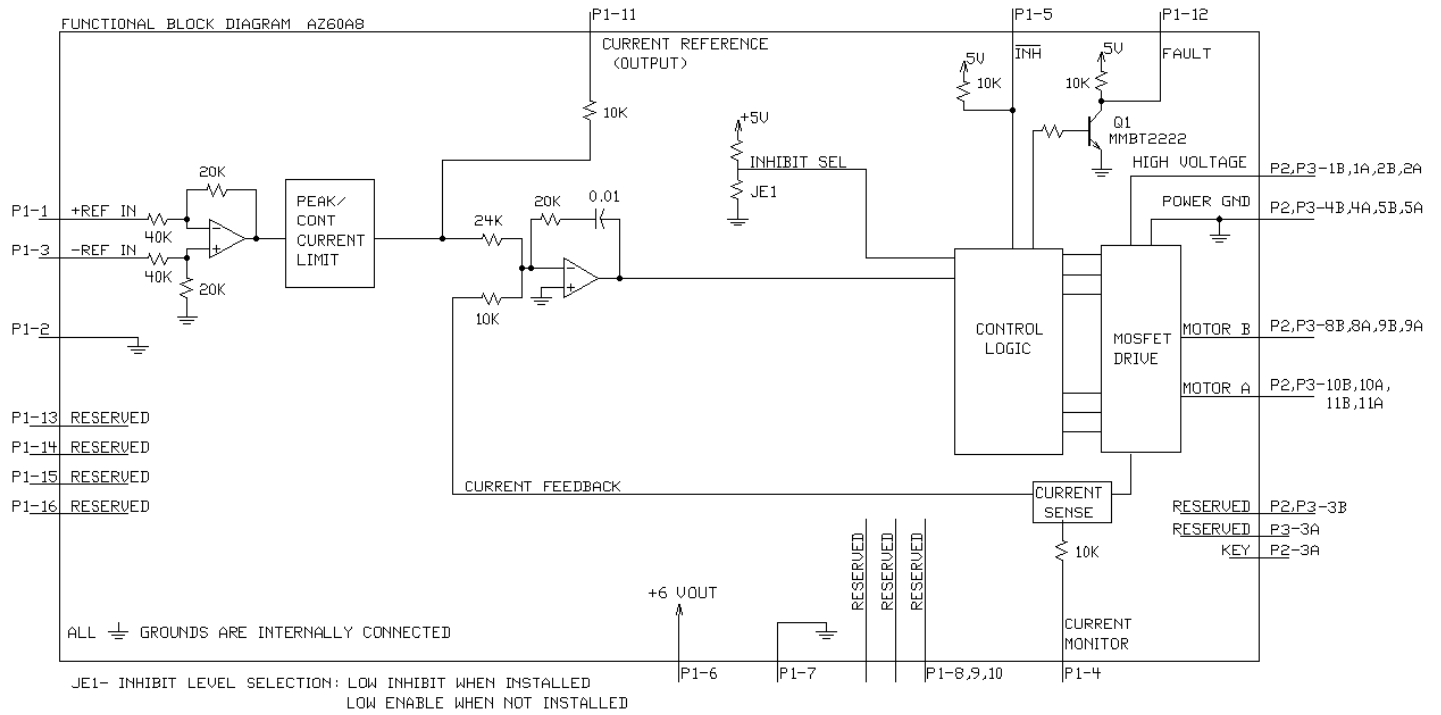
COMMAND SOURCE

- $\pm 10 V$ Analog




COMPLIANCES & AGENCY APPROVALS

- UL
- cUL
- CE Class A (LVD)
- CE Class A (EMC)
- RoHS

BLOCK DIAGRAM



Information on Approvals and Compliances

	<p>US and Canadian safety compliance with UL 508c, the industrial standard for power conversion electronics. UL registered under file number E140173. Note that machine components compliant with UL are considered UL registered as opposed to UL listed as would be the case for commercial products.</p>
	<p>Compliant with European CE for both the Class A EMC Directive 2004/108/EC on Electromagnetic Compatibility (specifically EN 61000-6-4:2007 and EN 61000-6-2:2005) and LVD requirements of directive 2006/95/EC (specifically EN 60204-1:2006), a low voltage directive to protect users from electrical shock.</p>
	<p>RoHS (Reduction of Hazardous Substances) is intended to prevent hazardous substances such as lead from being manufactured in electrical and electronic equipment.</p>

SPECIFICATIONS

Power Specifications		
Description	Units	Value
DC Supply Voltage Range	VDC	10 - 80
DC Bus Under Voltage Limit	VDC	9
DC Bus Over Voltage Limit	VDC	88
Maximum Peak Output Current ¹	A	60
Maximum Continuous Output Current	A	30
Maximum Continuous Output Power	W	2280
Maximum Power Dissipation at Continuous Current	W	120
Minimum Load Inductance (Line-To-Line) ²	µH	100
Low Voltage Supply Outputs	-	+6 VDC (30 mA)
Switching Frequency	kHz	31

Control Specifications		
Description	Units	Value
Command Sources	-	±10 V Analog
Modes of Operation	-	Current
Motors Supported	-	Single Phase (Brushed, Voice Coil, Inductive Load)
Hardware Protection	-	Over Current, Over Temperature, Over Voltage, Under Voltage, Short Circuit (Phase-Phase & Phase-Ground)

Mechanical Specifications		
Description	Units	Value
Agency Approvals	-	CE Class A (EMC), CE Class A (LVD), cUL, RoHS, UL
Size (H x W x D)	mm (in)	76.2 x 50.8 x 22.86 (3 x 2 x 0.9)
Weight	g (oz)	119.7 (4.2)
Heatsink (Base) Temperature Range ³	°C (°F)	0 - 75 (32 - 167)
Storage Temperature Range	°C (°F)	-40 - 85 (-40 - 185)
P1 Connector	-	16-pin, 2.54 mm spaced header
P2 Connector	-	22-pin, 2.54 mm spaced, dual-row header
P3 Connector	-	22-pin, 2.54 mm spaced, dual-row header

Notes

1. Maximum duration of peak current is ~2 seconds. Peak RMS value must not exceed continuous current rating of the drive.
2. Lower inductance is acceptable for bus voltages well below maximum. Use external inductance to meet requirements.
3. Additional cooling and/or heatsink may be required to achieve rated performance.

PIN FUNCTIONS

P1 - Signal Connector			
Pin	Name	Description / Notes	I/O
1	+REF IN	Differential Reference Input (± 10 V Operating Range, ± 15 V Maximum Input)	I
2	SIGNAL GND	Signal Ground	GND
3	-REF IN	Differential Reference Input (± 10 V Operating Range, ± 15 V Maximum Input)	I
4	CURRENT MONITOR	Current Monitor. Analog output signal proportional to the actual current output. Scaling is 20 A/V. Measure relative to signal ground.	O
5	INHIBIT IN	TTL level (+5 V) inhibit/enable input. Leave open to enable drive. Pull to ground to inhibit drive. Inhibit turns off all power devices.	I
6	+6V 30mA OUT	+6V @ 30mA power supply for customer use.	O
7	SIGNAL GND	Signal Ground	GND
8	RESERVED	Reserved	-
9	RESERVED		-
10	RESERVED		-
11	CURRENT REFERENCE	Measures the command signal to the internal current-loop. This pin has a maximum output of ± 7.3 V when the drive outputs maximum peak current. Measure relative to signal ground.	O
12	FAULT OUT	TTL level (+5 V) output becomes high when power devices are disabled due to at least one of the following conditions: inhibit, output short circuit, over voltage, over temperature, power-up reset.	O
13	RESERVED	Reserved	-
14	RESERVED		-
15	RESERVED		-
16	RESERVED		-

P2 and P3- Power Connectors			
Pin	Name	Description / Notes	I/O
1b	1a	DC Power Input. 3A Continuous Current Rating Per Pin. Requires at least 470 μ F / 100 V external electrolytic capacitor connected as close as possible to pins between High Voltage and Power Ground.	I
2b	2a		I
3b		Not Connected (Reserved) Key: No Connection (pin removed) for P2. Not Connected (Reserved) for P3.	-
	3a		-
4b	4a	Power Ground (Common With Signal Ground). 3A Continuous Current Rating Per Pin.	GND
5b	5a		GND
6b	6a	Reserved	-
7b	7a		-
8b	8a		O
9b	9a	Motor Phase Outputs. Current output distributed equally across both P2 and P3 connectors – 8 pins per motor phase. At ambient temperatures above 50°C, 3A continuous current carrying capacity per pin. At 25°C ambient, 6A continuous current carrying capacity per pin.	O
10b	10a		O
11b	11a		O
			O

HARDWARE SETTINGS

Jumper Settings

Jumper is a SMT, 0 ohm resistor located on the underside of the drive PCB. By default, the drive is configured with the jumper installed. Typical drive operation will not require the jumper to be removed. Please contact the factory before jumper removal.

Jumper	Description	Configuration	
		Not Installed	Installed
JE1	Inhibit logic. Sets the logic level of inhibit pins. Labeled JE1 on the PCB of the drive.	Low Enable	Low Inhibit

MECHANICAL INFORMATION

P1 - Signal Connector

Connector Information		16-pin, 2.54 mm spaced header
Mating Connector	Details	Samtec: BCS-116-L-S-PE
	Included with Drive	No

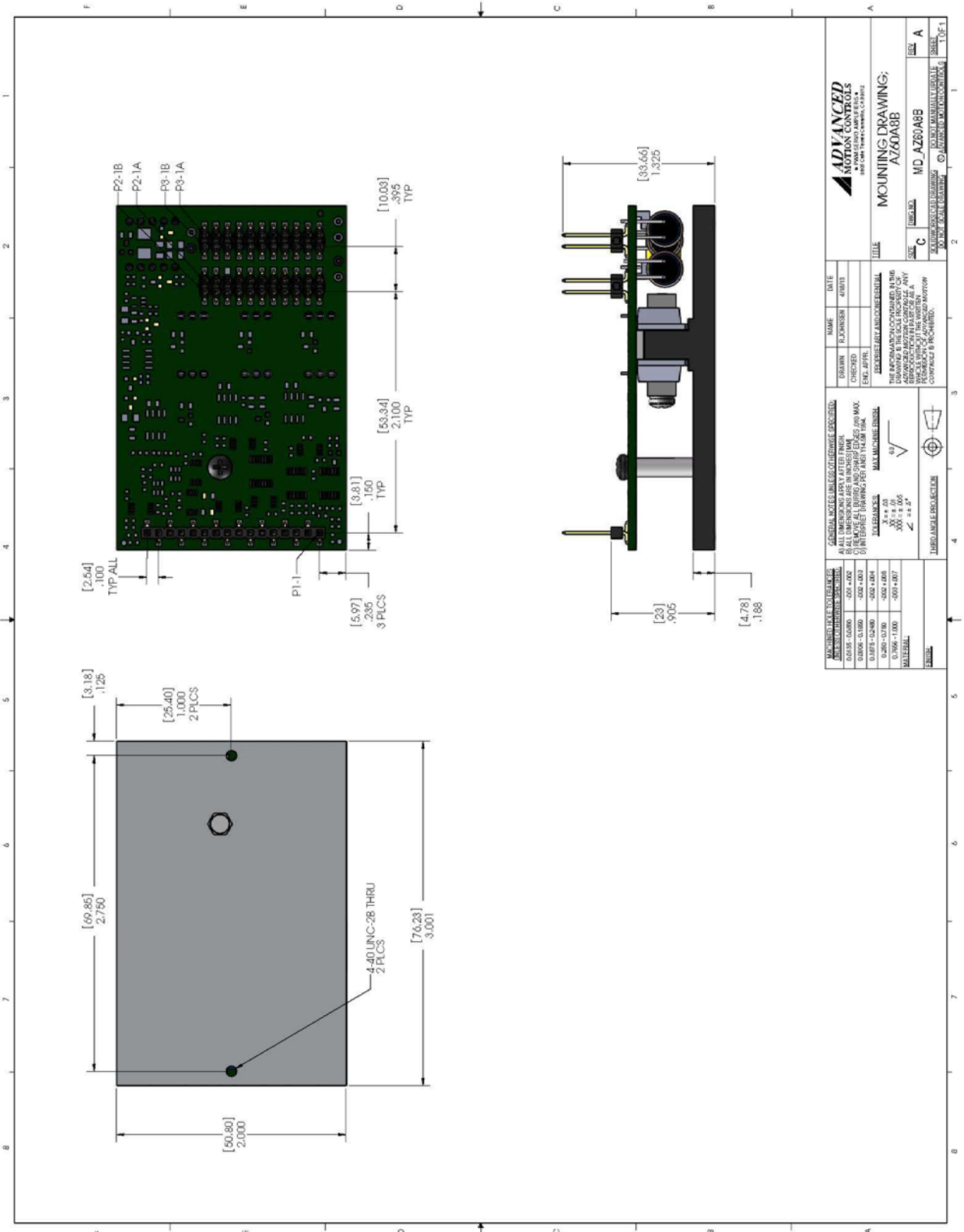
P2 - Power Connector

Connector Information		22-pin, 2.54 mm spaced, dual-row header
Mating Connector	Details	Samtec: SSM-111-L-DV
	Included with Drive	No

P3 - Power Connector

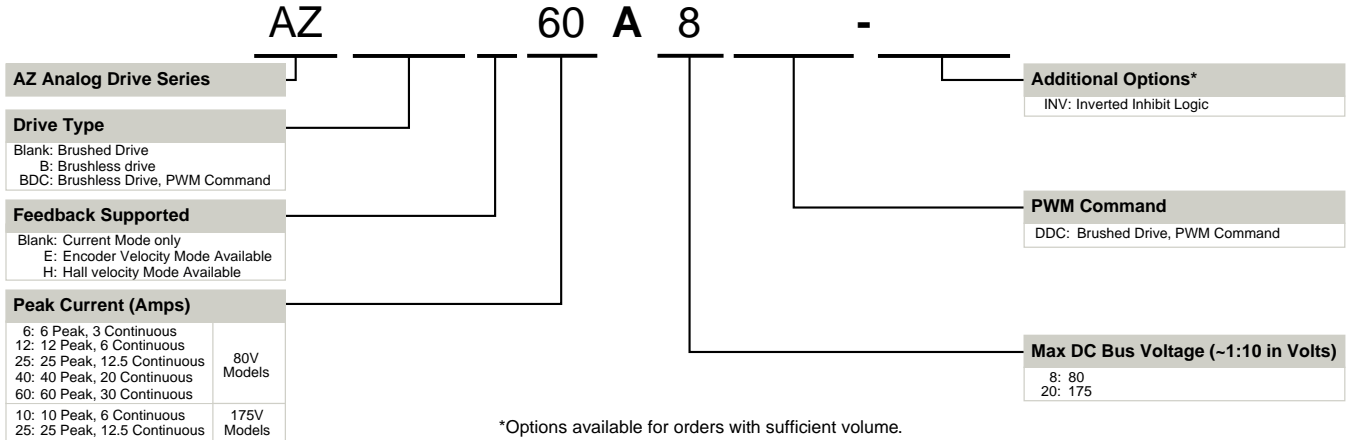
Connector Information		22-pin, 2.54 mm spaced, dual-row header
Mating Connector	Details	Samtec: SSM-111-L-DV
	Included with Drive	No

MOUNTING DIMENSIONS



WEIGHTS AND TOLERANCES		GENERAL NOTES UNLESS OTHERWISE SPECIFIED:		NAME	DATE
0.0000	0.0000	A ALL DIMENSIONS APPLY AFTER FINISH	1	DRWNR	4/8/11
0.0006	0.0006	2 FINISH ALL DIMENSIONS AND CHAMFER EDGES .070 MAX.	2	CHKD	
0.0015	0.0015	3 FINISH ALL DIMENSIONS PER PART NUMBER 150L	3	ENGR	
0.0025	0.0025	4 FINISH ALL DIMENSIONS PER PART NUMBER 150L	4		
0.0050	0.0050	5 FINISH ALL DIMENSIONS PER PART NUMBER 150L	5		
0.0100	0.0100	6 FINISH ALL DIMENSIONS PER PART NUMBER 150L	6		
0.0200	0.0200	7 FINISH ALL DIMENSIONS PER PART NUMBER 150L	7		
0.0500	0.0500	8 FINISH ALL DIMENSIONS PER PART NUMBER 150L	8		
0.1000	0.1000	9 FINISH ALL DIMENSIONS PER PART NUMBER 150L	9		
0.2000	0.2000	10 FINISH ALL DIMENSIONS PER PART NUMBER 150L	10		
0.5000	0.5000	11 FINISH ALL DIMENSIONS PER PART NUMBER 150L	11		
1.0000	1.0000	12 FINISH ALL DIMENSIONS PER PART NUMBER 150L	12		
2.0000	2.0000	13 FINISH ALL DIMENSIONS PER PART NUMBER 150L	13		
5.0000	5.0000	14 FINISH ALL DIMENSIONS PER PART NUMBER 150L	14		
10.0000	10.0000	15 FINISH ALL DIMENSIONS PER PART NUMBER 150L	15		
20.0000	20.0000	16 FINISH ALL DIMENSIONS PER PART NUMBER 150L	16		
50.0000	50.0000	17 FINISH ALL DIMENSIONS PER PART NUMBER 150L	17		
100.0000	100.0000	18 FINISH ALL DIMENSIONS PER PART NUMBER 150L	18		
200.0000	200.0000	19 FINISH ALL DIMENSIONS PER PART NUMBER 150L	19		
500.0000	500.0000	20 FINISH ALL DIMENSIONS PER PART NUMBER 150L	20		
1000.0000	1000.0000	21 FINISH ALL DIMENSIONS PER PART NUMBER 150L	21		
2000.0000	2000.0000	22 FINISH ALL DIMENSIONS PER PART NUMBER 150L	22		
5000.0000	5000.0000	23 FINISH ALL DIMENSIONS PER PART NUMBER 150L	23		
10000.0000	10000.0000	24 FINISH ALL DIMENSIONS PER PART NUMBER 150L	24		
20000.0000	20000.0000	25 FINISH ALL DIMENSIONS PER PART NUMBER 150L	25		
50000.0000	50000.0000	26 FINISH ALL DIMENSIONS PER PART NUMBER 150L	26		
100000.0000	100000.0000	27 FINISH ALL DIMENSIONS PER PART NUMBER 150L	27		
200000.0000	200000.0000	28 FINISH ALL DIMENSIONS PER PART NUMBER 150L	28		
500000.0000	500000.0000	29 FINISH ALL DIMENSIONS PER PART NUMBER 150L	29		
1000000.0000	1000000.0000	30 FINISH ALL DIMENSIONS PER PART NUMBER 150L	30		
2000000.0000	2000000.0000	31 FINISH ALL DIMENSIONS PER PART NUMBER 150L	31		
5000000.0000	5000000.0000	32 FINISH ALL DIMENSIONS PER PART NUMBER 150L	32		
10000000.0000	10000000.0000	33 FINISH ALL DIMENSIONS PER PART NUMBER 150L	33		
20000000.0000	20000000.0000	34 FINISH ALL DIMENSIONS PER PART NUMBER 150L	34		
50000000.0000	50000000.0000	35 FINISH ALL DIMENSIONS PER PART NUMBER 150L	35		
100000000.0000	100000000.0000	36 FINISH ALL DIMENSIONS PER PART NUMBER 150L	36		
200000000.0000	200000000.0000	37 FINISH ALL DIMENSIONS PER PART NUMBER 150L	37		
500000000.0000	500000000.0000	38 FINISH ALL DIMENSIONS PER PART NUMBER 150L	38		
1000000000.0000	1000000000.0000	39 FINISH ALL DIMENSIONS PER PART NUMBER 150L	39		
2000000000.0000	2000000000.0000	40 FINISH ALL DIMENSIONS PER PART NUMBER 150L	40		
5000000000.0000	5000000000.0000	41 FINISH ALL DIMENSIONS PER PART NUMBER 150L	41		
10000000000.0000	10000000000.0000	42 FINISH ALL DIMENSIONS PER PART NUMBER 150L	42		
20000000000.0000	20000000000.0000	43 FINISH ALL DIMENSIONS PER PART NUMBER 150L	43		
50000000000.0000	50000000000.0000	44 FINISH ALL DIMENSIONS PER PART NUMBER 150L	44		
100000000000.0000	100000000000.0000	45 FINISH ALL DIMENSIONS PER PART NUMBER 150L	45		
200000000000.0000	200000000000.0000	46 FINISH ALL DIMENSIONS PER PART NUMBER 150L	46		
500000000000.0000	500000000000.0000	47 FINISH ALL DIMENSIONS PER PART NUMBER 150L	47		
1000000000000.0000	1000000000000.0000	48 FINISH ALL DIMENSIONS PER PART NUMBER 150L	48		
2000000000000.0000	2000000000000.0000	49 FINISH ALL DIMENSIONS PER PART NUMBER 150L	49		
5000000000000.0000	5000000000000.0000	50 FINISH ALL DIMENSIONS PER PART NUMBER 150L	50		
10000000000000.0000	10000000000000.0000	51 FINISH ALL DIMENSIONS PER PART NUMBER 150L	51		
20000000000000.0000	20000000000000.0000	52 FINISH ALL DIMENSIONS PER PART NUMBER 150L	52		
50000000000000.0000	50000000000000.0000	53 FINISH ALL DIMENSIONS PER PART NUMBER 150L	53		
100000000000000.0000	100000000000000.0000	54 FINISH ALL DIMENSIONS PER PART NUMBER 150L	54		
200000000000000.0000	200000000000000.0000	55 FINISH ALL DIMENSIONS PER PART NUMBER 150L	55		
500000000000000.0000	500000000000000.0000	56 FINISH ALL DIMENSIONS PER PART NUMBER 150L	56		
1000000000000000.0000	1000000000000000.0000	57 FINISH ALL DIMENSIONS PER PART NUMBER 150L	57		
2000000000000000.0000	2000000000000000.0000	58 FINISH ALL DIMENSIONS PER PART NUMBER 150L	58		
5000000000000000.0000	5000000000000000.0000	59 FINISH ALL DIMENSIONS PER PART NUMBER 150L	59		
10000000000000000.0000	10000000000000000.0000	60 FINISH ALL DIMENSIONS PER PART NUMBER 150L	60		
20000000000000000.0000	20000000000000000.0000	61 FINISH ALL DIMENSIONS PER PART NUMBER 150L	61		
50000000000000000.0000	50000000000000000.0000	62 FINISH ALL DIMENSIONS PER PART NUMBER 150L	62		
100000000000000000.0000	100000000000000000.0000	63 FINISH ALL DIMENSIONS PER PART NUMBER 150L	63		
200000000000000000.0000	200000000000000000.0000	64 FINISH ALL DIMENSIONS PER PART NUMBER 150L	64		
500000000000000000.0000	500000000000000000.0000	65 FINISH ALL DIMENSIONS PER PART NUMBER 150L	65		
1000000000000000000.0000	1000000000000000000.0000	66 FINISH ALL DIMENSIONS PER PART NUMBER 150L	66		
2000000000000000000.0000	2000000000000000000.0000	67 FINISH ALL DIMENSIONS PER PART NUMBER 150L	67		
5000000000000000000.0000	5000000000000000000.0000	68 FINISH ALL DIMENSIONS PER PART NUMBER 150L	68		
10000000000000000000.0000	10000000000000000000.0000	69 FINISH ALL DIMENSIONS PER PART NUMBER 150L	69		
20000000000000000000.0000	20000000000000000000.0000	70 FINISH ALL DIMENSIONS PER PART NUMBER 150L	70		
50000000000000000000.0000	50000000000000000000.0000	71 FINISH ALL DIMENSIONS PER PART NUMBER 150L	71		
100000000000000000000.0000	100000000000000000000.0000	72 FINISH ALL DIMENSIONS PER PART NUMBER 150L	72		
200000000000000000000.0000	200000000000000000000.0000	73 FINISH ALL DIMENSIONS PER PART NUMBER 150L	73		
500000000000000000000.0000	500000000000000000000.0000	74 FINISH ALL DIMENSIONS PER PART NUMBER 150L	74		
1000000000000000000000.0000	1000000000000000000000.0000	75 FINISH ALL DIMENSIONS PER PART NUMBER 150L	75		
2000000000000000000000.0000	2000000000000000000000.0000	76 FINISH ALL DIMENSIONS PER PART NUMBER 150L	76		
5000000000000000000000.0000	5000000000000000000000.0000	77 FINISH ALL DIMENSIONS PER PART NUMBER 150L	77		
10000000000000000000000.0000	10000000000000000000000.0000	78 FINISH ALL DIMENSIONS PER PART NUMBER 150L	78		
20000000000000000000000.0000	20000000000000000000000.0000	79 FINISH ALL DIMENSIONS PER PART NUMBER 150L	79		
50000000000000000000000.0000	50000000000000000000000.0000	80 FINISH ALL DIMENSIONS PER PART NUMBER 150L	80		
100000000000000000000000.0000	100000000000000000000000.0000	81 FINISH ALL DIMENSIONS PER PART NUMBER 150L	81		
200000000000000000000000.0000	200000000000000000000000.0000	82 FINISH ALL DIMENSIONS PER PART NUMBER 150L	82		
500000000000000000000000.0000	500000000000000000000000.0000	83 FINISH ALL DIMENSIONS PER PART NUMBER 150L	83		
1000000000000000000000000.0000	1000000000000000000000000.0000	84 FINISH ALL DIMENSIONS PER PART NUMBER 150L	84		
2000000000000000000000000.0000	2000000000000000000000000.0000	85 FINISH ALL DIMENSIONS PER PART NUMBER 150L	85		
5000000000000000000000000.0000	5000000000000000000000000.0000	86 FINISH ALL DIMENSIONS PER PART NUMBER 150L	86		
10000000000000000000000000.0000	10000000000000000000000000.0000	87 FINISH ALL DIMENSIONS PER PART NUMBER 150L	87		
20000000000000000000000000.0000	20000000000000000000000000.0000	88 FINISH ALL DIMENSIONS PER PART NUMBER 150L	88		
50000000000000000000000000.0000	50000000000000000000000000.0000	89 FINISH ALL DIMENSIONS PER PART NUMBER 150L	89		
100000000000000000000000000.0000	100000000000000000000000000.0000	90 FINISH ALL DIMENSIONS PER PART NUMBER 150L	90		
200000000000000000000000000.0000	200000000000000000000000000.0000	91 FINISH ALL DIMENSIONS PER PART NUMBER 150L	91		
500000000000000000000000000.0000	500000000000000000000000000.0000	92 FINISH ALL DIMENSIONS PER PART NUMBER 150L	92		
1000000000000000000000000000.0000	1000000000000000000000000000.0000	93 FINISH ALL DIMENSIONS PER PART NUMBER 150L	93		
2000000000000000000000000000.0000	2000000000000000000000000000.0000	94 FINISH ALL DIMENSIONS PER PART NUMBER 150L	94		
5000000000000000000000000000.0000	5000000000000000000000000000.0000	95 FINISH ALL DIMENSIONS PER PART NUMBER 150L	95		
10000000000000000000000000000.0000	10000000000000000000000000000.0000	96 FINISH ALL DIMENSIONS PER PART NUMBER 150L	96		
20000000000000000000000000000.0000	20000000000000000000000000000.0000	97 FINISH ALL DIMENSIONS PER PART NUMBER 150L	97		
50000000000000000000000000000.0000	50000000000000000000000000000.0000	98 FINISH ALL DIMENSIONS PER PART NUMBER 150L	98		
100000000000000000000000000000.0000	100000000000000000000000000000.0000	99 FINISH ALL DIMENSIONS PER PART NUMBER 150L	99		
200000000000000000000000000000.0000	200000000000000000000000000000.0000	100 FINISH ALL DIMENSIONS PER PART NUMBER 150L	100		

PART NUMBERING INFORMATION



ADVANCED Motion Controls AZ series of servo drives are available in many configurations. Note that not all possible part number combinations are offered as standard drives. All models listed in the selection tables of the website are readily available, standard product offerings.

ADVANCED Motion Controls also has the capability to promptly develop and deliver specified products for OEMs with volume requests. Our Applications and Engineering Departments will work closely with your design team through all stages of development in order to provide the best servo drive solution for your system. Equipped with on-site manufacturing for quick-turn customs capabilities, *ADVANCED* Motion Controls utilizes our years of engineering and manufacturing expertise to decrease your costs and time-to-market while increasing system quality and reliability.

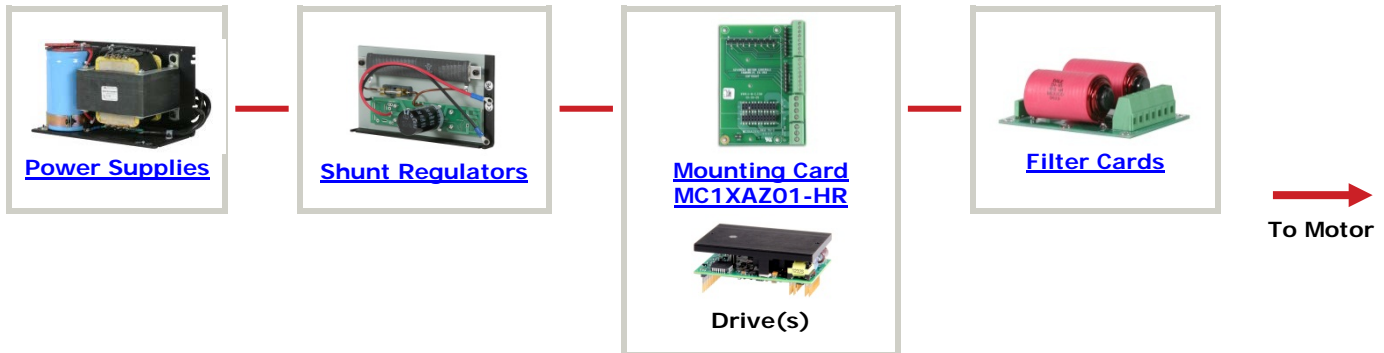
Examples of Modifications and Customized Products

- ▲ Integration of Drive into Motor Housing
- ▲ Mount OEM PCB onto Drive Without Cables
- ▲ Multi-axis Configuration for Compact System
- ▲ Custom PCB and Baseplate for Optimized Footprint
- ▲ RTV/Epoxy Components for High Vibration
- ▲ OEM Specified Connectors for Instant Compatibility
- ▲ OEM Specified Silkscreen for Custom Appearance
- ▲ Increased Thermal Limits for High Temp. Operation
- ▲ Integrate OEM Circuitry onto Drive PCB
- ▲ Custom Control Loop Tuned to Motor Characteristics
- ▲ Custom I/O Interface for System Compatibility
- ▲ Preset Switches and Pots to Reduce User Setup
- ▲ Optimized Switching Frequency
- ▲ Ramped Velocity Command for Smooth Acceleration
- ▲ Remove Unused Features to Reduce OEM Cost
- ▲ Application Specific Current and Voltage Limits

Feel free to contact Applications Engineering for further information and details.

Available Accessories

ADVANCED Motion Controls offers a variety of accessories designed to facilitate drive integration into a servo system. Visit www.a-m-c.com to see which accessories will assist with your application design and implementation.



All specifications in this document are subject to change without written notice. Actual product may differ from pictures provided in this document.