

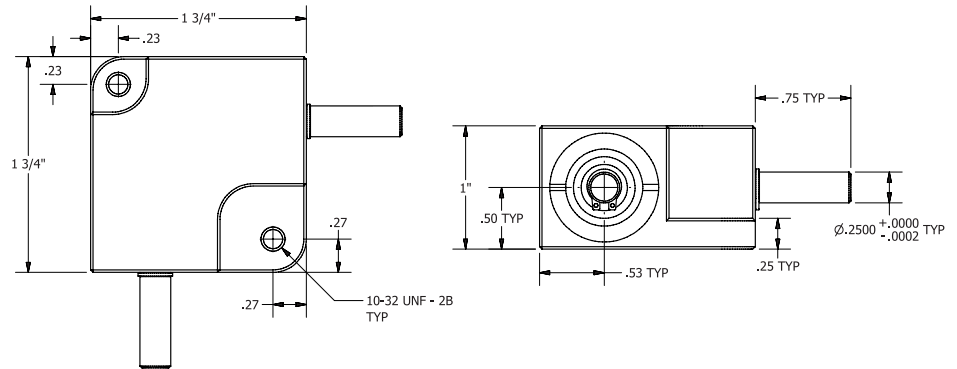
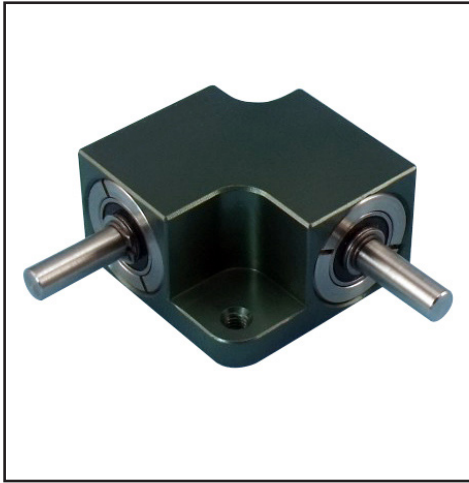
**BG24**

# GEARBOXES

**BG24**

## 1:1 Gearboxes

Uniquely rated so you can balance Torque to RPM to Life



### BGH24-1

| LIFETIME (hrs) as a FUNCTION of RPM & TORQUE |        |        |        |        |        |        |
|--|--------|--------|--------|--------|--------|--------|
| Torque                                       | RPM    |        |        |        |        |        |
| In-lb  | 50     | 100    | 200    | 500    | 1000   | 2000   |
| 6  | 20,000 | 20,000 | 20,000 | 20,000 | 20,000 | 20,000 |
| 7  | 20,000 | 20,000 | 20,000 | 20,000 | 20,000 | 16,000 |
| 8  | 20,000 | 20,000 | 20,000 | 10,500 | 4,500  | 1,800  |
| 9  | 20,000 | 10,000 | 4,600  | 1,650  | 750    | 340    |
| 10   | 9,100  | 4,500  | 2,150  | 810    | 480    | 175    |
| 11   | 4,900  | 2,400  | 1,200  | 430    | 200    | 90     |
| 12   | 2,700  | 1,330  | 640    | 240    | 110    | 50     |

2,000 RPM Maximum

#### Additional Information

Calculations are based on an application factor of 1.25. They apply to a medium impact drive turning a uniform load or a uniform drive turning a moderate impact load. Life Time figures shown are for guidance only. Testing in your application is required. You will need to assess duty cycles and confirm suitability with your own calculations.

### BGSH24-1 + BGSH24-1A (Low Backlash)

| LIFETIME (hrs) as a FUNCTION of RPM & TORQUE |        |        |        |        |        |        |        |
|--|--------|--------|--------|--------|--------|--------|--------|
| Torque                                       | RPM    |        |        |        |        |        |        |
| In-lb  | 50     | 100    | 200    | 500    | 1000   | 2000   | 3000   |
| 15   | 20,000 | 20,000 | 20,000 | 20,000 | 20,000 | 20,000 | 14,300 |
| 16   | 20,000 | 20,000 | 20,000 | 20,000 | 20,000 | 9,000  | 5,000  |
| 17   | 20,000 | 20,000 | 20,000 | 20,000 | 8,600  | 3,300  | 1,860  |
| 18   | 20,000 | 20,000 | 20,000 | 8,200  | 3,400  | 1,320  | 730    |
| 19   | 20,000 | 20,000 | 10,000 | 3,400  | 1,400  | 550    | 305    |

3,000 RPM Maximum

Standard Backlash of 1° 1/2° Backlash Available

#### Torque from 6 to 19 inch\* pounds

**Application rated for optimum operation and cost**

**You can balance Torque to RPM and Operating Life**

**Backlash 1°, with option of 1/2°**

**Weight of only 0.46 lb.**

**RPM to 3,000**

**Temp range -5° F to +175° F, -40° F grease optional**

**Made in USA with American CNC machines**

#### Materials

303 Stainless Steel Shafts

Anodized Aluminum Housing

Sealed Steel Ball Bearings

Greased for life: Shell Alvania EP2. Cold temp. grease optional

**Exclusive 24 Month Warranty!**

**See our website for CAD files**

# ondrives.us

1-888-260-7466

516-771-6444

sales@ondrivesus.com

www.ondrivesus.com