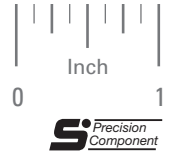


› MATERIAL:

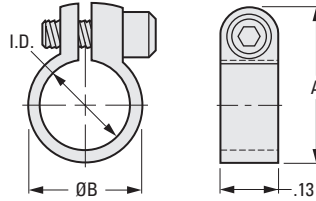
303 Stainless Steel

› SPECIFICATIONS:

Tolerances	
Decimals	± .005
Fractions	± 1/64



Stainless Steel Socket Head  
Cap Screw Supplied



**INCH COMPONENT**

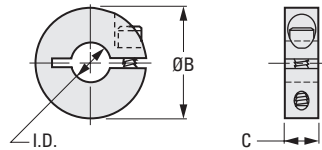
Catalog Number	I.D. +.001 -.000	A ± .008	B Dia.	Screw Size	Clearance Radius
<b>303 Stainless Steel</b>					
S3503Y-C058	.125	.305	.190	#2-56	9/32
S3503Y-C059	.187	.370	.250	#2-56	5/16
S3503Y-C060	.250	.435	.310	#2-56	11/32

› MATERIAL:

303 Stainless Steel  
2024-T351 Aluminum, Anodized

› SPECIFICATIONS:

Tolerances	
Decimals	± .005
Fractions	± 1/64



Stainless Steel Socket Head  
Cap Screw Supplied

**INCH COMPONENT**

Catalog Number		Shaft Size	I.D. +.001 -.000	B Dia.	C	Screw Size	Clearance Radius
303 Stainless Steel	2024-T351 Aluminum Anodized						
S3501Y-C062	S3501Y-C065	.125	.188	7/8	.250	#6-32	33/64
S3501Y-C063	S3501Y-C066	.187	.250	7/8	.250	#6-32	33/64
S3501Y-C064	S3501Y-C067	.250	.313	7/8	.250	#6-32	33/64
S3501Y-C068	S3501Y-C071	.093	.125	5/8	.156	#2-56	3/8
S3501Y-C069	S3501Y-C072	.125	.188	5/8	.156	#2-56	3/8
S3501Y-C070	S3501Y-C073	.187	.250	5/8	.156	#2-56	3/8
S3501Y-C074	S3501Y-C077	.093	.125	9/16	.156	#2-56	3/8
S3501Y-C075	S3501Y-C078	.125	.188	9/16	.156	#2-56	3/8
S3501Y-C076	S3501Y-C079	.187	.250	9/16	.156	#2-56	3/8
S3501Y-C075M	S3501Y-C078M	.125	.188	9/16	.125	#1-72	3/8
S3501Y-C076M	S3501Y-C079M	.187	.250	9/16	.125	#1-72	3/8