

PIN TYPE GEAR HUB



> MATERIAL:

2024-T4 Aluminum Alloy

PHONE: 516.328.3300 • FAX: 516.326.8827 • WWW.SDP-SI.COM

> FINISH:

Clear Anodized

> SPECIFICATIONS:

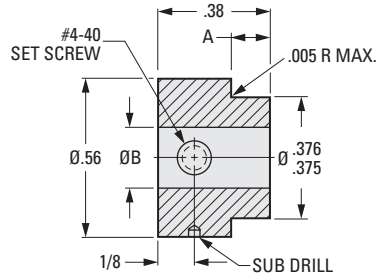
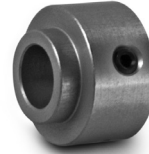
For Gears with 1/32 face width, use hub with .062 "A" dim.

For Gears with 1/16 face width, use hub with .093 "A" dim.

For Gears with 3/32 face width, use hub with .125 "A" dim.



These hubs can be used with stamped or molded hubless gears or disc and drum dials.



INCH COMPONENT

Catalog Number	A ± .010	B Bore Dia. +.001 -.000
A 1A16-25612	.062	.125
A 1A16-35612	.093	.125
A 1A16-45612	.125	.125
A 1A16-35615	.093	.156
A 1A16-45615	.125	.156
A 1A16-25618	.062	.187
A 1A16-35618	.093	.187
A 1A16-45618	.125	.187
A 1A16-25621	.062	.218
A 1A16-45621	.125	.218
A 1A16-25625	.062	.250
A 1A16-35625	.093	.250
A 1A16-45625	.125	.250
A 1A16-25628	.062	.281
A 1A16-35628	.093	.281
A 1A16-45628	.125	.281