

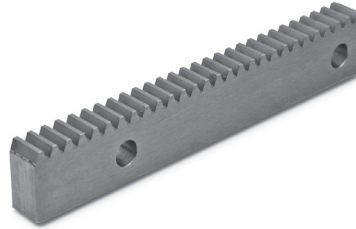
20° PRESSURE ANGLE

PHONE: 516.328.3300 • FAX: 516.326.8827 • WWW.SDP-SI.COM

MATERIAL:

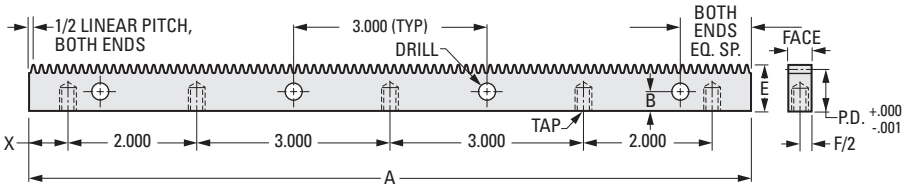
416 Stainless Steel

Available on special order:
14-1/2° P.A., other materials, hole
layouts and passivation.



Rack Tolerances

Tooth to tooth spacing error	.0005
Total accumulated spacing error	.002
Parallelism of pitch line to base	.001



INCH COMPONENT

Catalog Number	Pitch	A +.000 -.005	E +.000 -.005	X ± .005	Face ± .002
S1819Y-RD-01P	16	11.185	.725	.591	.365 ± .010
S1819Y-RD-02P	20	11.147	.725	.572	.365 ± .010
S1819Y-RD-03P	24	11.120	.480	.558	.230
S1819Y-RD-04P	1/10	10.994	.480	.495	.230
S1819Y-RD-05P	32	11.087	.480	.542	.230
S1819Y-RD-06P	48	11.055	.480	.526	.230
S1819Y-RD-07P	1/20	10.994	.480	.495	.230
S1819Y-RD-08P	64	11.038	.480	.518	.230
S1819Y-RD-09P	72	11.033	.355	.515	.167
S1819Y-RD-10P	80	11.028	.355	.513	.167
S1819Y-RD-11P	96	11.022	.355	.510	.167

Catalog Number (Ref. Only)	B	P.D.	Linear Pitch	Drill	Tap
S1819Y-RD-01P	.312	.6625	.1963	.266	#10-32 x 3/8
S1819Y-RD-02P	.312	.6750	.1570	.266	#10-32 x 3/8
S1819Y-RD-03P	.218	.4383	.1309	.147	#6/32 x 1/4
S1819Y-RD-04P	.218	.4482	.1000	.147	#6/32 x 1/4
S1819Y-RD-05P	.218	.4487	.0982	.147	#6/32 x 1/4
S1819Y-RD-06P	.218	.4592	.0654	.147	#6/32 x 1/4
S1819Y-RD-07P	.218	.4591	.0500	.147	#6/32 x 1/4
S1819Y-RD-08P	.218	.4644	.0491	.147	#6/32 x 1/4
S1819Y-RD-09P	.156	.3411	.0436	.120	#4-40 x 3/16
S1819Y-RD-10P	.156	.3425	.0393	.120	#4-40 x 3/16
S1819Y-RD-11P	.156	.3446	.0327	.120	#4-40 x 3/16