

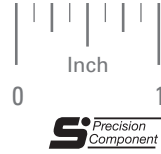
20° PRESSURE ANGLE

PHONE: 516.328.3300 • FAX: 516.326.8827 • WWW.SDP-SI.COM

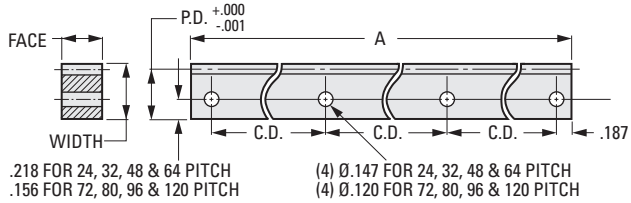
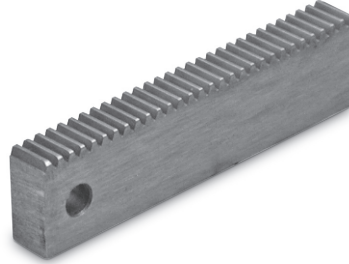
> MATERIAL:

416 Stainless Steel
2024-T4 Aluminum, Chromic Acid Anodized (non-ROHS Compliant)

Available on special order:
14-1/2° P.A., other materials and hole layouts, passivation for Stainless Steel.



Rack Tolerances	
Tooth to tooth spacing error	.0005
Total accumulated spacing error	.002
Parallelism of pitch line to base	.001



INCH COMPONENT

Catalog Number	Material	Pitch	P.D.	C.D.	Face $\pm .002$	A $\pm .01$ in.	Width $\begin{smallmatrix} +.000 \\ -.002 \end{smallmatrix}$
S1811Y-RC-1	Stainless Steel	24	.4383	3.208	.230	10	.480
S1811Y-RC-1A	Aluminum						
S1811Y-RC-2	Stainless Steel	32	.4487	2.875			
S1811Y-RC-2A	Aluminum						
S1811Y-RC-3	Stainless Steel	48	.4592	2.208		7	
S1811Y-RC-3A	Aluminum						
S1811Y-RC-4	Stainless Steel	64	.4644	1.541	.167	5	
S1811Y-RC-4A	Aluminum						
S1810Y-RC-5	Stainless Steel	72	.3411	1.541			.167
S1810Y-RC-5A	Aluminum						
S1810Y-RC-6	Stainless Steel	80	.3425	.875	.167	3	
S1810Y-RC-6A	Aluminum						
S1810Y-RC-7	Stainless Steel	96	.3446	.875	.167	3	
S1810Y-RC-7A	Aluminum						
S1810Y-RC-8	Stainless Steel	120	.3467	.875	.167	3	
S1810Y-RC-8A	Aluminum						

