

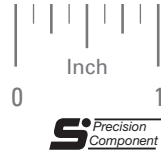
20° PRESSURE ANGLE

PHONE: 516.328.3300 • FAX: 516.326.8827 • WWW.SDP-SI.COM

> MATERIAL:

416 Stainless Steel

Available on special order:
 14-1/2° P.A., teeth not listed,
 different material, passivation
 for Stainless Steel.



Rack Tolerances	
Tooth to tooth spacing error	.0005
Total accumulated spacing error	.002
Parallelism of pitch line to base	.001

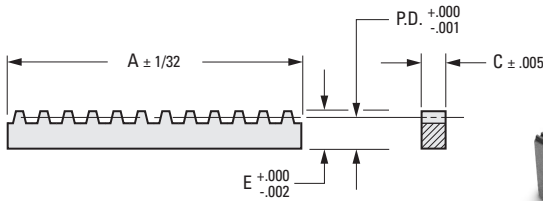


Fig. 1

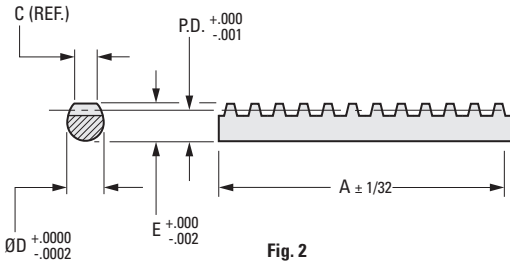
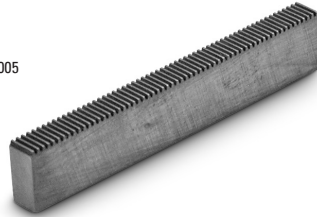
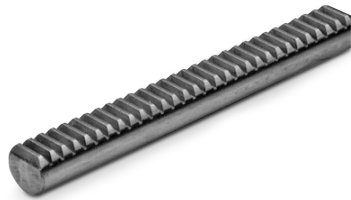


Fig. 2



INCH COMPONENT

Catalog Number	Pitch	A	P.D.	C	D Dia.	E
Fig. 1 Rectangular Rack						
S1811Y-RB-1P	24	18	.4383	.230	—	.480
S1811Y-RB-2P	32	18	.4487	.230	—	.480
S1811Y-RB-3P	48	18	.4592	.230	—	.480
S1811Y-RB-4P	64	11	.4644	.230	—	.480
S1810Y-RB-5P	72	11	.3411	.167	—	.355
S1810Y-RB-6P	96	11	.3446	.167	—	.355
S1810Y-RB-7P	120	11	.3467	.167	—	.355
Fig. 2 Round Rack						
S1809Y-RA-1P	24	18	.4383	.194	.4997	.480
S1808Y-RA-2P	32	18	.3087	.217	.3747	.340
S1807Y-RA-3P	48	18	.1992	.162	.2497	.220
S1807Y-RA-4P	64	11	.2044	.162	.2497	.220
S1805Y-RA-5P	72	11	.1421	.140	.1872	.156
S1805Y-RA-6P	96	11	.1456	.140	.1872	.156
S1804Y-RA-7P	120	11	.1067	.067	.1247	.115

