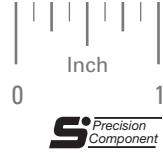


AGMA 10  
 .1873 BORE  
 20° PRESSURE ANGLE

PHONE: 516.328.3300 • FAX: 516.326.8827 • WWW.SDP-SI.COM



**> MATERIAL:**  
 303 Stainless Steel

Available on special order:  
 Teeth not listed, different pitch,  
 bore size and passivation.

See S1268Z-series in the part number  
 index for hubless gears that can be mounted  
 on these cluster gears and hubs.



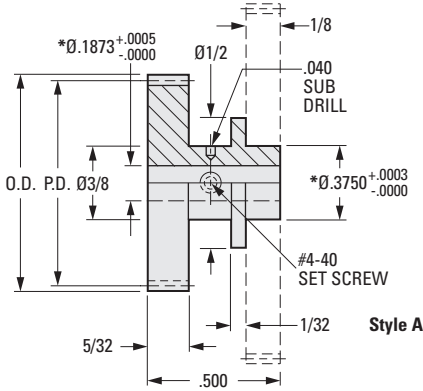
**Style A**



**Style B**

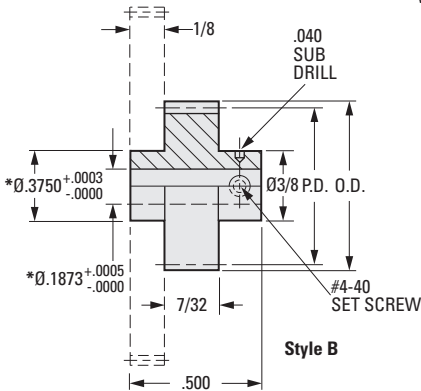


**Style C**

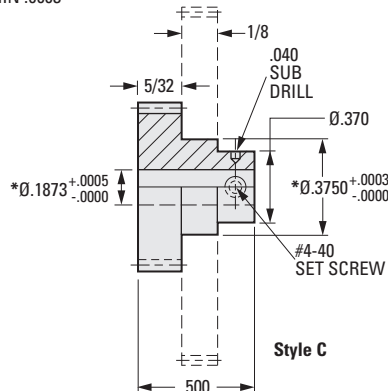


**Style A**

\* CONCENTRIC  
 WITHIN .0003



**Style B**



**Style C**

**INCH COMPONENT**

| Catalog Number  |                 |                 | No. of Teeth | P.D.  | O.D.  |
|-----------------|-----------------|-----------------|--------------|-------|-------|
| Style A         | Style B         | Style C         |              |       |       |
| S1F74Z-A080S035 | —               | —               | 35           | .4375 | .4625 |
| S1F74Z-A080S040 | S1F94Z-B080S040 | S1F74Z-C080S040 | 40           | .5000 | .5250 |
| S1F74Z-A080S050 | S1F94Z-B080S050 | S1F74Z-C080S050 | 50           | .6250 | .6500 |
| S1F74Z-A080S060 | —               | —               | 60           | .7500 | .7750 |

- I
- R
- T
- 1**
- 2
- 3
- 4
- 5
- 6
- 7
- 8
- 9
- 10
- 11
- 12
- 13
- 14
- 15
- 16