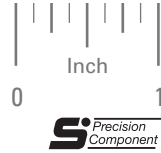


AGMA 10
1/8 FACE
1/4 BORE
20° PRESSURE ANGLE

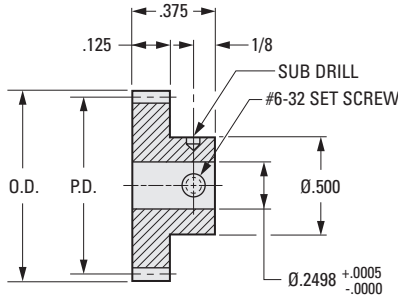
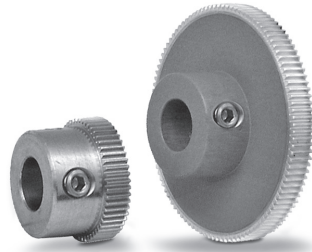
PHONE: 516.328.3300 • FAX: 516.326.8827 • WWW.SDP-SI.COM



> MATERIAL:

- 303 Stainless Steel
- 2024 Aluminum, Anodized
- T4 or T351 Aluminum Alloy, anodized before cutting

Available on special order:
14-1/2° P.A., teeth not listed, different bore size and/or material, passivation for Stainless Steel.



INCH COMPONENT

Catalog Number		No. of Teeth	P.D.	O.D.
303 Stainless Steel	2024 Aluminum Anodized			
S1066Z-096S052	S1066Z-096A052	52	.5417	.563
S1066Z-096S054	S1066Z-096A054	54	.5625	.583
S1066Z-096S056	S1066Z-096A056	56	.5833	.604
S1066Z-096S060	S1066Z-096A060	60	.6250	.646
S1066Z-096S063	S1066Z-096A063	63	.6563	.677
S1066Z-096S072	S1066Z-096A072	72	.7500	.771
S1066Z-096S076	S1066Z-096A076	76	.7917	.813
S1066Z-096S078	S1066Z-096A078	78	.8125	.833
S1066Z-096S080	S1066Z-096A080	80	.8333	.854
S1066Z-096S084	S1066Z-096A084	84	.8750	.896
S1066Z-096S090	S1066Z-096A090	90	.9375	.958
S1066Z-096S092	S1066Z-096A092	92	.9583	.979
S1066Z-096S096	S1066Z-096A096	96	1.0000	1.021
S1066Z-096S100	S1066Z-096A100	100	1.0417	1.063
S1066Z-096S108	S1066Z-096A108	108	1.1250	1.146
S1066Z-096S110	S1066Z-096A110	110	1.1458	1.167
S1066Z-096S112	S1066Z-096A112	112	1.1667	1.188
S1066Z-096S120	S1066Z-096A120	120	1.2500	1.271
S1066Z-096S125	S1066Z-096A125	125	1.3020	1.323
S1066Z-096S126	S1066Z-096A126	126	1.3125	1.333
S1066Z-096S130	S1066Z-096A130	130	1.3542	1.375
S1066Z-096S132	S1066Z-096A132	132	1.3750	1.396
S1066Z-096S140	S1066Z-096A140	140	1.4583	1.479
S1066Z-096S149	S1066Z-096A149	149	1.5521	1.573
S1066Z-096S150	S1066Z-096A150	150	1.5625	1.583
S1066Z-096S163	S1066Z-096A163	163	1.6979	1.719
S1066Z-096S170	S1066Z-096A170	170	1.7708	1.792
S1066Z-096S180	S1066Z-096A180	180	1.8750	1.896
S1066Z-096S190	S1066Z-096A190	190	1.9792	2.000

