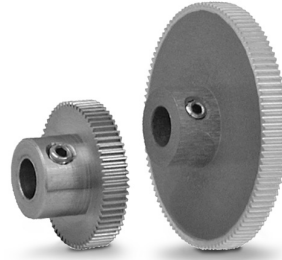
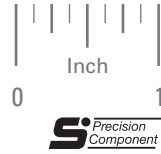


AGMA 10  
1/8 FACE  
3/16 BORE  
20° PRESSURE ANGLE

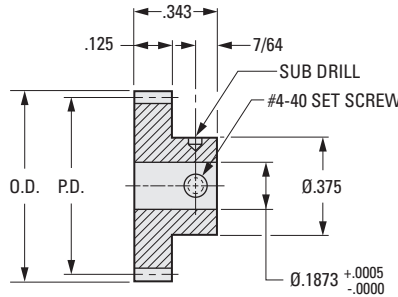
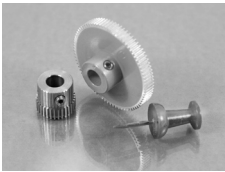
PHONE: 516.328.3300 • FAX: 516.326.8827 • WWW.SDP-SI.COM



**> MATERIAL:**

- 303 Stainless Steel
- 2024 Aluminum, Anodized
- T4 or T351 Aluminum Alloy, anodized before cutting

Available on special order:  
14-1/2° P.A., teeth not listed, different bore size and/or material, passivation for Stainless Steel.



**INCH COMPONENT**

Catalog Number		No. of Teeth	P.D.	O.D.
303 Stainless Steel	2024 Aluminum Anodized			
S1064Z-096S030	S1064Z-096A030	30 Δ	.3125	.333
S1064Z-096S032	S1064Z-096A032	32 Δ	.3333	.354
S1064Z-096S034	S1064Z-096A034	34 Δ	.3542	.375
S1064Z-096S035	S1064Z-096A035	35 Δ	.3646	.385
S1064Z-096S036	S1064Z-096A036	36 Δ	.3750	.396
S1064Z-096S039	S1064Z-096A039	39	.4063	.427
S1064Z-096S040	S1064Z-096A040	40	.4167	.438
S1064Z-096S041	S1064Z-096A041	41	.4271	.448
S1064Z-096S042	S1064Z-096A042	42	.4375	.458
S1064Z-096S044	S1064Z-096A044	44	.4583	.479
S1064Z-096S046	S1064Z-096A046	46	.4792	.500
S1064Z-096S048	S1064Z-096A048	48	.5000	.521
S1064Z-096S056	S1064Z-096A056	56	.5833	.604
S1064Z-096S060	S1064Z-096A060	60	.6250	.646
S1064Z-096S064	S1064Z-096A064	64	.6667	.688
S1064Z-096S072	S1064Z-096A072	72	.7500	.771
S1064Z-096S075	S1064Z-096A075	75	.7813	.802
S1064Z-096S080	S1064Z-096A080	80	.8333	.854
S1064Z-096S085	S1064Z-096A085	85	.8854	.906
S1064Z-096S090	S1064Z-096A090	90	.9375	.958
S1064Z-096S096	S1064Z-096A096	96	1.0000	1.021
S1064Z-096S100	S1064Z-096A100	100	1.0417	1.063
S1064Z-096S104	S1064Z-096A104	104	1.0833	1.104
S1064Z-096S110	S1064Z-096A110	110	1.1458	1.167
S1064Z-096S120	S1064Z-096A120	120	1.2500	1.271
S1064Z-096S130	S1064Z-096A130	130	1.3542	1.375

Δ Hob cuts into hub. Hub diameter never exceeds gear O.D.

