

PINION SHAFTS

SDP/SI

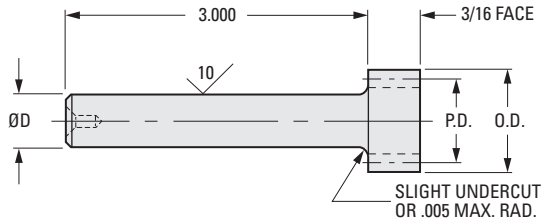
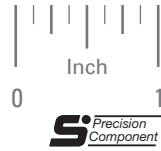
AGMA 10
20° PRESSURE ANGLE

PHONE: 516.328.3300 • FAX: 516.326.8827 • WWW.SDP-SI.COM

> MATERIAL:

303 Stainless Steel

Available on special order:
Other lengths, teeth, not listed
and passivation.



INCH COMPONENT

Catalog Number	Pitch	No. of Teeth	P.D.	O.D. +.000 -.002	D Dia. +.0000 -.0002	
S1H84Z-064S16	64	16	.2500	.281	.1247	
S1H84Z-064S20		20	.3125	.344		
S1H84Z-072S18		72	18	.2500		.278
S1H84Z-072S24	24		.3333	.361		
S1H84Z-080S20	80	20	.2500	.275		.1872
S1H84Z-096S24	96	24	.271	.354		
S1H84Z-096S32		32	.3333			
S1H85Z-048S12		48	12		.2500	
S1H85Z-048S18	18		.3750	.417		
S1H85Z-064S16	64		16	.2500	.281	
S1H85Z-064S20		20	.3125	.344		
S1H85Z-072S18		72	18	.2500	.278	
S1H85Z-072S24	24		.3333	.361		
S1H85Z-080S20	80	20	.2500	.275	.2497	
S1H87Z-024S12	24	12	.5000	.583		
S1H87Z-032S16	32	16	.292	.563		
S1H87Z-048S12	48	12	.2500	.292		
S1H87Z-048S18		18	.3750	.417		
S1H87Z-064S16		64	16	.2500		.281
S1H87Z-064S20	20		.3125	.344		
S1H87Z-064S24	24		.3750	.406		

Rev: 9.11.13 JC

I

R

T

1

2

3

4

5

6

7

8

9

10

11

12

13

14

15

16