

MODULE 0.5, 0.8, 1, 1.5, 2, 2.5, 3, & 3.5  
20° PRESSURE ANGLE

PHONE: 516.328.3300 • FAX: 516.326.8827 • WWW.SDP-SI.COM

► MATERIAL:  
Acetal

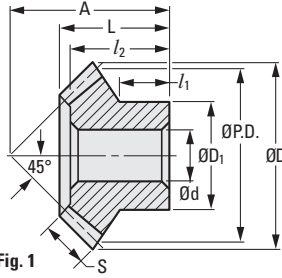


Fig. 1

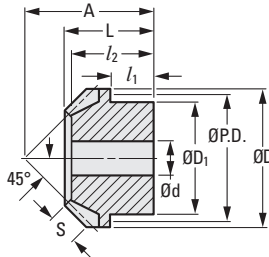


Fig. 2

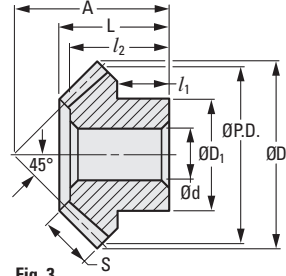


Fig. 3



METRIC COMPONENT

| Catalog Number         | Mod. | P.D. | D Dia. | d Bore | S Face Width | L Length | D <sub>1</sub> Hub Dia. | l <sub>1</sub> Hub Proj. | A    | l <sub>2</sub> |
|------------------------|------|------|--------|--------|--------------|----------|-------------------------|--------------------------|------|----------------|
| <b>Fig. 1 16 Teeth</b> |      |      |        |        |              |          |                         |                          |      |                |
| A 1M 4MYZ05            | 0.5  | 8    | 8.7    | 3      | 2            | 8        | 7                       | 6                        | 10.5 | 8              |
| A 1M 4MYZ10            | 1    | 16   | 17.6   | 5      | 4.7          | 13.6     | 12                      | 8                        | 18.4 | —              |
| A 1M 4MYZ15            | 1.5  | 24   | 26.4   | 8      | 7            | 18.4     | 18.5                    | 10                       | 25.8 | 16.2           |
| A 1M 4MYZ20A           | 2    | 32   | 34.9   | 8      | 10           | 21.2     | 21.9                    | 9.6                      | 30.4 | 18.3           |
| A 1M 4MYZ20            | 2    | 32   | 34.9   | 10     | 10           | 21.2     | 21.9                    | 9.6                      | 30.4 | 18.3           |
| A 1M 4MYZ25A           | 2.5  | 40   | 43.5   | 8      | 12.3         | 25.5     | 25.2                    | 11.5                     | 37   | 22.9           |
| A 1M 4MYZ25            | 2.5  | 40   | 43.5   | 12     | 12.3         | 25.5     | 25.2                    | 11.5                     | 37   | 22.9           |
| A 1M 4MYZ30A           | 3    | 48   | 52.3   | 14     | 13.8         | 29.2     | 28.8                    | 13.2                     | 43   | 25.8           |
| A 1M 4MYZ30B           | 3    | 48   | 52.3   | 15     | 13.8         | 29.2     | 28.8                    | 13.2                     | 43   | 25.8           |
| A 1M 4MYZ30C           | 3    | 48   | 52.3   | 17     | 13.8         | 29.2     | 28.8                    | 13.2                     | 43   | 25.8           |
| A 1M 4MYZ30            | 3    | 48   | 52.3   | 20     | 13.8         | 29.2     | 28.8                    | 13.2                     | 43   | 25.8           |
| A 1M 4MYZ35            | 3.5  | 56   | 61.4   | 18     | 15.8         | 33.1     | 33.3                    | 14.4                     | 49.5 | 28.1           |
| A 1M 4MYZ35A           | 3.5  | 56   | 61.4   | 20     | 15.8         | 33.1     | 33.3                    | 14.4                     | 49.5 | 28.1           |
| <b>Fig. 2 20 Teeth</b> |      |      |        |        |              |          |                         |                          |      |                |
| A 1M 4MYH05            | 0.5  | 10   | 10.7   | 3      | 2.5          | 8        | 8                       | 4                        | 11   | 7              |
| A 1M 4MYH08            | 0.8  | 16   | 17.1   | 5      | 3.5          | 10.8     | 12                      | 5                        | 16   | 10             |
| A 1M 4MYH10            | 1    | 20   | 21.4   | 6      | 4.5          | 14.6     | 16                      | 7                        | 21   | 13             |
| A 1M 4MYH15            | 1.5  | 30   | 32.1   | 8      | 7            | 20.6     | 20                      | 10                       | 30   | 19             |
| <b>Fig. 3 30 Teeth</b> |      |      |        |        |              |          |                         |                          |      |                |
| A 1M 4MYZ10A           | 1    | 30   | 31.4   | 6      | 7.2          | 15.3     | 15                      | 7.5                      | 24.8 | 12.9           |