

STRAIGHT MITER GEARS • MODULE 0.6 TO 1.5

SDP/SI

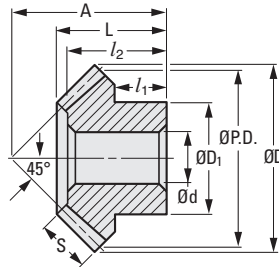
ISO CLASS 8
 MODULE 0.6, 1 & 1.5
 20° PRESSURE ANGLE

PHONE: 516.328.3300 • FAX: 516.326.8827 • WWW.SDP-SI.COM



QUALITY CLASS

> **MATERIAL:**
 Aluminum, Brass, Steel or Stainless Steel



METRIC COMPONENT

Catalog Number			Material
Module 0.6	Module 1	Module 1.5	
A 1A 4MY06020	A 1A 4MY10020	A 1A 4MY15020	Aluminum 2024 T4
A 1B 4MY06020	A 1B 4MY10020	A 1B 4MY15020	Brass ASTM B-16
A 1C 4MY06020	A 1C 4MY10020	A 1C 4MY15020	Steel SAE 4140
A 1X 4MY06020	A 1X 4MY10020	A 1X 4MY15020	Stainless Steel AISI 416

Module	No. of Teeth	P.D.	D Dia.	d Bore H8	d Tolerance	S Face Width	L Length	D ₁ Hub Dia.	l ₁ Hub Proj.	A	l ₂
0.6	20	12	12.8	4	+0.018/0	3	6.4	7	3	10	5.5
1	20	20	21.4	8	+0.022/0	5	10.9	12	5	17	9.5
1.5	20	30	*31.5	12	+0.027/0	7	15.5	18	7	25	13

* Truncated O.D., Actual O.D. = 32.1