

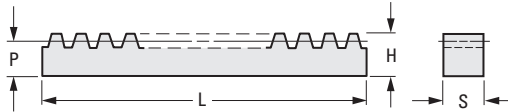
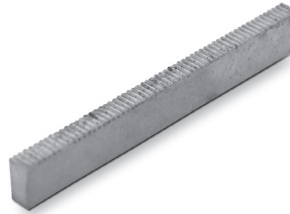
ISO CLASS 8
20° PRESSURE ANGLE

PHONE: 516.328.3300 • FAX: 516.326.8827 • WWW.SDP-SI.COM



QUALITY CLASS

› **MATERIAL:**
Steel, Brass, or Nylon



METRIC COMPONENT

Catalog Number	Module	Material	S Face Width	H Height mm	P Pitch Height	L Length mm
A 1C12MY04A075	0.4	Steel	4.8	9.5	9.13	75
A 1C12MY04A150	0.4	Steel	4.8	9.5	9.13	150
A 1C12MY04A300	0.4	Steel	4.8	9.5	9.13	300
A 1B12MY04A075	0.4	Brass	4.8	9.5	9.13	75
A 1B12MY04A150	0.4	Brass	4.8	9.5	9.13	150
A 1B12MY04A300	0.4	Brass	4.8	9.5	9.13	300
A 1C12MY04B075	0.4	Steel	4.8	4.8	4.34	75
A 1C12MY04B150	0.4	Steel	4.8	4.8	4.34	150
A 1C12MY04B300	0.4	Steel	4.8	4.8	4.34	300
A 1B12MY04B075	0.4	Brass	4.8	4.8	4.34	75
A 1B12MY04B150	0.4	Brass	4.8	4.8	4.34	150
A 1B12MY04B300	0.4	Brass	4.8	4.8	4.34	300
A 1P12MY04C075	0.4	Nylon	6.3	6.3	5.94	75
A 1P12MY04C150	0.4	Nylon	6.3	6.3	5.94	150
A 1P12MY04C300	0.4	Nylon	6.3	6.3	5.94	300
A 1C12MY05A075	0.5	Steel	4.8	9.5	9.03	75
A 1C12MY05A150	0.5	Steel	4.8	9.5	9.03	150
A 1C12MY05A300	0.5	Steel	4.8	9.5	9.03	300
A 1B12MY05A075	0.5	Brass	4.8	9.5	9.03	75
A 1B12MY05A150	0.5	Brass	4.8	9.5	9.03	150
A 1B12MY05A300	0.5	Brass	4.8	9.5	9.03	300
A 1C12MY05B075	0.5	Steel	4.8	4.8	4.26	75
A 1C12MY05B150	0.5	Steel	4.8	4.8	4.26	150
A 1C12MY05B300	0.5	Steel	4.8	4.8	4.26	300
A 1B12MY05B075	0.5	Brass	4.8	4.8	4.26	75
A 1B12MY05B150	0.5	Brass	4.8	4.8	4.26	150
A 1B12MY05B300	0.5	Brass	4.8	4.8	4.26	300
A 1P12MY05C075	0.5	Nylon	6.3	6.3	5.85	75
A 1P12MY05C150	0.5	Nylon	6.3	6.3	5.85	150
A 1P12MY05C300	0.5	Nylon	6.3	6.3	5.85	300

Continued on the next page



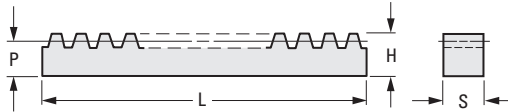
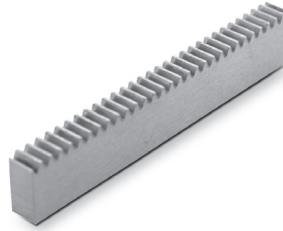
ISO CLASS 8
20° PRESSURE ANGLE

PHONE: 516.328.3300 • FAX: 516.326.8827 • WWW.SDP-SI.COM

› **MATERIAL:**
Steel, Brass, or Nylon



QUALITY CLASS



METRIC COMPONENT

Catalog Number	Module	Material	S Face Width	H Height	P Pitch Height	L Length mm
A 1C12MY08A075	0.8	Steel	6.3	12.7	11.9	75
A 1C12MY08A150	0.8	Steel	6.3	12.7	11.9	150
A 1C12MY08A300	0.8	Steel	6.3	12.7	11.9	300
A 1B12MY08A075	0.8	Brass	6.3	12.7	11.9	75
A 1B12MY08A150	0.8	Brass	6.3	12.7	11.9	150
A 1B12MY08A300	0.8	Brass	6.3	12.7	11.9	300
A 1C12MY08B075	0.8	Steel	6.3	6.3	5.56	75
A 1C12MY08B150	0.8	Steel	6.3	6.3	5.56	150
A 1C12MY08B300	0.8	Steel	6.3	6.3	5.56	300
A 1B12MY08B075	0.8	Brass	6.3	6.3	5.56	75
A 1B12MY08B150	0.8	Brass	6.3	6.3	5.56	150
A 1B12MY08B300	0.8	Brass	6.3	6.3	5.56	300
A 1P12MY08B075	0.8	Nylon	6.3	6.3	5.56	75
A 1P12MY08B150	0.8	Nylon	6.3	6.3	5.56	150
A 1P12MY08B300	0.8	Nylon	6.3	6.3	5.56	300
A 1C12MY10B150	1	Steel	7.9	15.9	14.88	150
A 1C12MY10B300	1	Steel	7.9	15.9	14.88	300
A 1C12MY10B600	1	Steel	7.9	15.9	14.88	600
A 1B12MY10B150	1	Brass	7.9	15.9	14.88	150
A 1B12MY10B300	1	Brass	7.9	15.9	14.88	300
A 1B12MY10B600	1	Brass	7.9	15.9	14.88	600
A 1C12MY10C150	1	Steel	7.9	7.9	6.94	150
A 1C12MY10C300	1	Steel	7.9	7.9	6.94	300
A 1C12MY10C600	1	Steel	7.9	7.9	6.94	600
A 1B12MY10C150	1	Brass	7.9	7.9	6.94	150
A 1B12MY10C300	1	Brass	7.9	7.9	6.94	300
A 1B12MY10C600	1	Brass	7.9	7.9	6.94	600
A 1P12MY10A150	1	Nylon	9.5	9.5	8.53	150
A 1P12MY10A300	1	Nylon	9.5	9.5	8.53	300
A 1P12MY10A600	1	Nylon	9.5	9.5	8.53	600

Continued from the previous page

