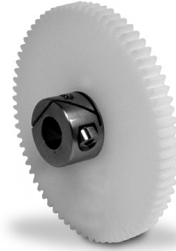
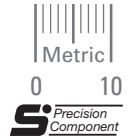


ISO CLASS 7
5 mm FACE WIDTH
5 & 8 mm BORE
20° PRESSURE ANGLE

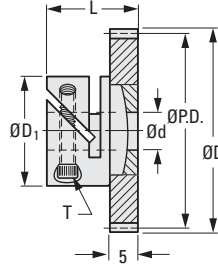


> MATERIAL:
Gear – Acetal
Hub – 303 Stainless Steel

> SPECIFICATIONS:
For Fairloc® Type Hub Gear

d Bore Ref.	T	D ₁	L
5	M2.5	14	13.5
8	M3	17	14.8

Available as special order:
14-1/2° P.A., teeth not listed
or different bore size, or
assembled onto pin type hub.



METRIC COMPONENT CATALOG NUMBER

S 1 V Z 0 8 M T 0 5

No. of
Teeth
Code

Bore Code	d Bore
05	5 (H7)
08	8 (H7)

No. of Teeth Code	No. of Teeth	P.D.	D Dia.
020	20	16	17.6
021	21	16.8	18.4
023	23	18.4	20
024	24	19.2	20.8
025	25	20	21.6
026	26	20.8	22.4
028	28	22.4	24
030	30	24	25.6
032	32	25.6	27.2
036	36	28.8	30.4
040	40	32	33.6
042	42	33.6	35.2
044	44	35.2	36.8
045	45	36	37.6
046	46	36.8	38.4
048	48	38.4	40
050	50	40	41.6
052	52	41.6	43.2
056	56	44.8	46.4
060	60	48	49.6
064	64	51.2	52.8
066	66	52.8	54.4
072	72	57.6	59.2
080	80	64	65.6
084	84	67.2	68.8
088	88	70.4	72
090	90	72	73.6
092	92	73.6	75.2
096	96	76.8	78.4
100	100	80	81.6
104	104	83.2	84.8
108	108	86.4	88
112	112	89.6	91.2
124	124	99.2	100.8