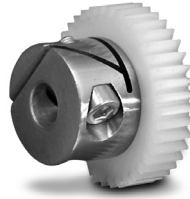
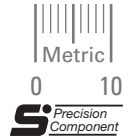


ISO CLASS 7  
5 mm FACE WIDTH  
5, 8 & mm BORE  
20° PRESSURE ANGLE



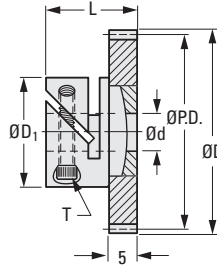
**> MATERIAL:**  
Gear – Acetal  
Hub – 303 Stainless Steel

**> SPECIFICATIONS:**

For Fairloc® Type Hub Gear

d Bore Ref.	T	D <sub>1</sub>	L
5	M2.5	14	13.5
8	M3	17	14.8

Available as special order:  
14-1/2° P.A., teeth not listed  
or different bore size, or  
assembled onto pin type hub.



**METRIC COMPONENT  
CATALOG NUMBER**

S 1 V Z 0 5 M    T 0 5

No. of  
Teeth  
Code

Bore Code	d Bore
05	5 (H7)
08	8 (H7)

No. of Teeth Code	No. of Teeth	P.D.	D Dia.
028	28	14	15
029	29	14.5	15.5
030	30	15	16
032	32	16	17
036	36	18	19
040	40	20	21
044	44	22	23
045	45	22.5	23.5
048	48	24	25
050	50	25	26
056	56	28	29
060	60	30	31
064	64	32	33
068	68	34	35
070	70	35	36
072	72	36	37
075	75	37.5	38.5
080	80	40	41
084	84	42	43
090	90	45	46
092	92	46	47
096	96	48	49
100	100	50	51
110	110	55	56
120	120	60	61
138	138	69	70
144	144	72	73
168	168	84	85
180	180	90	91
186	186	93	94