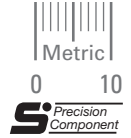


ISO CLASS 7
5 & 7 mm FACE
20° PRESSURE ANGLE



➤ **MATERIAL:**
303 Stainless Steel

➤ **SPECIFICATIONS:**
Socket Head Cap Screw Supplied.
Gears larger than 60 teeth have two-piece construction.
Fairloc® hubs require controlled shaft tolerances. Suggested tolerance according to g6, h6 or h7.

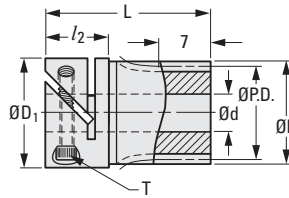
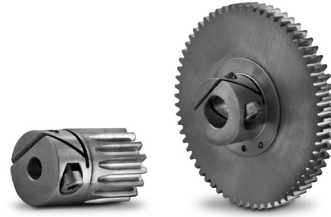


Fig. 1

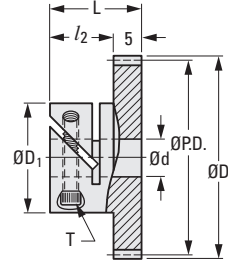


Fig. 2

METRIC COMPONENT

Catalog Number	No. of Teeth	P.D.	D Dia.	d Bore H7	d Tolerance	L	D ₁ Dia.	l ₂	T	Hub Clear. Rad.
Fig. 1										
S1VS08M014F0704	14	11.2	12.8	4	+0.012/0	22	14	8	M2.5	8.3
S1VS08M015F0704	15	12	13.6	4	+0.012/0	22	14	8	M2.5	8.3
S1VS08M016F0704	16	12.8	14.4	4	+0.012/0	22	14	8	M2.5	8.3
S1VS08M018F0704	18	14.4	16	4	+0.012/0	22	14	8	M2.5	8.3
Fig. 2										
S1VS08M020F0504	20	16	17.6	4	+0.012/0	13	14	8	M2.5	8.3
S1VS08M022F0504	22	17.6	19.2	4	+0.012/0	13	14	8	M2.5	8.3
S1VS08M024F0505	24	19.2	20.8	5	+0.012/0	13	14	8	M2.5	8.3
S1VS08M025F0505	25	20	21.6	5	+0.012/0	13	14	8	M2.5	8.3
S1VS08M028F0505	28	22.4	24	5	+0.012/0	13	14	8	M2.5	8.3
S1VS08M030F0505	30	24	25.6	5	+0.012/0	13	14	8	M2.5	8.3
S1VS08M032F0505	32	25.6	27.2	5	+0.012/0	13	14	8	M2.5	8.3
S1VS08M036F0506	36	28.8	30.4	6	+0.012/0	15	17	10	M3	11.3
S1VS08M040F0506	40	32	33.6	6	+0.012/0	15	17	10	M3	11.3
S1VS08M045F0506	45	36	37.6	6	+0.012/0	15	17	10	M3	11.3
S1VS08M048F0506	48	38.4	40	6	+0.012/0	15	17	10	M3	11.3
S1VS08M050F0506	50	40	41.6	6	+0.012/0	15	17	10	M3	11.3
S1VS08M054F0506	54	43.2	44.8	6	+0.012/0	15	17	10	M3	11.3
S1VS08M056F0506	56	44.8	46.4	6	+0.012/0	15	17	10	M3	11.3
S1VS08M060F0508	60	48	49.6	8	+0.015/0	15	17	10	M3	11.3
S1VS08M064F0508	64	51.2	52.8	8	+0.015/0	15	17	10	M3	11.3
S1VS08M072F0508	72	57.6	59.2	8	+0.015/0	15	17	10	M3	11.3
S1VS08M080F0510	80	64	65.6	10	+0.015/0	19	24	14	M4	14
S1VS08M090F0510	90	72	73.6	10	+0.015/0	19	24	14	M4	14
S1VS08M100F0510	100	80	81.6	10	+0.015/0	19	24	14	M4	14