

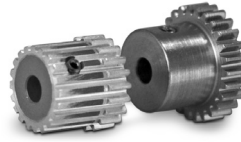
ISO CLASS 7

3 mm FACE

3 mm BORE

20° PRESSURE ANGLE

PHONE: 516.328.3300 • FAX: 516.326.8827 • WWW.SDP-SI.COM

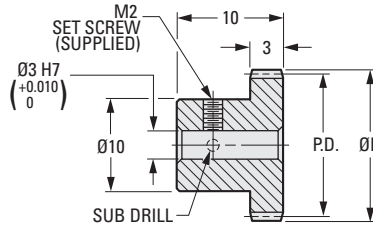


➤ MATERIAL:

303 Stainless Steel or
2024 Aluminum Anodized-
T4 or T351 Aluminum Alloy,
anodized before cutting.

Available on special order:

Number of teeth not listed, different
bore size and /or material, passivation
for stainless steel.



METRIC COMPONENT

Catalog Number		No. of Teeth	P.D.	D Dia.
303 Stainless Steel	2024 Aluminum Anodized			
S10T05M020S0303	S10T05M020A0303	20*	10	11
S10T05M021S0303	S10T05M021A0303	21*	10.5	11.5
S10T05M022S0303	S10T05M022A0303	22	11	12
S10T05M024S0303	S10T05M024A0303	24	12	13
S10T05M025S0303	S10T05M025A0303	25	12.5	13.5
S10T05M026S0303	S10T05M026A0303	26	13	14
S10T05M028S0303	S10T05M028A0303	28	14	15
S10T05M030S0303	S10T05M030A0303	30	15	16
S10T05M032S0303	S10T05M032A0303	32	16	17
S10T05M034S0303	S10T05M034A0303	34	17	18
S10T05M036S0303	S10T05M036A0303	36	18	19
S10T05M040S0303	S10T05M040A0303	40	20	21
S10T05M042S0303	S10T05M042A0303	42	21	22
S10T05M046S0303	S10T05M046A0303	46	23	24
S10T05M048S0303	S10T05M048A0303	48	24	25
S10T05M050S0303	S10T05M050A0303	50	25	26
S10T05M055S0303	S10T05M055A0303	55	27.5	28.5
S10T05M056S0303	S10T05M056A0303	56	28	29
S10T05M060S0303	S10T05M060A0303	60	30	31
S10T05M064S0303	S10T05M064A0303	64	32	33
S10T05M065S0303	S10T05M065A0303	65	32.5	33.5
S10T05M070S0303	S10T05M070A0303	70	35	36
S10T05M072S0303	S10T05M072A0303	72	36	37
S10T05M075S0303	S10T05M075A0303	75	37.5	38.5
S10T05M080S0303	S10T05M080A0303	80	40	41
S10T05M084S0303	S10T05M084A0303	84	42	43
S10T05M090S0303	S10T05M090A0303	90	45	46
S10T05M096S0303	S10T05M096A0303	96	48	49
S10T05M100S0303	S10T05M100A0303	100	50	51
S10T05M105S0303	S10T05M105A0303	105	52.5	53.5

* Hob cuts into hub. Hub diameter never exceeds gear O.D.

- I
- R
- T
- 1
- 2
- 3
- 4
- 5
- 6
- 7
- 8
- 9
- 10
- 11
- 12
- 13
- 14
- 15
- A