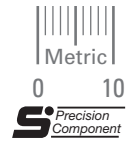


ISO CLASS 7
5 & 7 mm FACE
20° PRESSURE ANGLE

PHONE: 516.328.3300 • FAX: 516.326.8827 • WWW.SDP-SI.COM



► **MATERIAL:**
303 Stainless Steel

► **SPECIFICATIONS:**
Socket Head Cap Screw Supplied.
Gears larger than 90 teeth have two-piece construction.
Fairloc® hubs require controlled shaft tolerances. Suggested tolerance according to g6, h6 or h7.

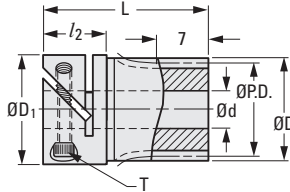
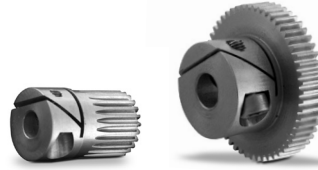


Fig. 1

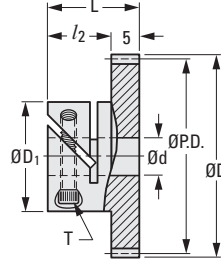


Fig. 2

METRIC COMPONENT

Catalog Number	No. of Teeth	P.D.	D Dia.	d Bore H7	d Tolerance	L	D ₁ Dia.	l ₂	T	Hub Clear. Rad.
Fig. 1										
S1VS05M016F0704	16	8	9	4	+0.012/0	22	14	8	M2.5	8.3
S1VS05M018F0704	18	9	10	4	+0.012/0	22	14	8	M2.5	8.3
S1VS05M020F0704	20	10	11	4	+0.012/0	22	14	8	M2.5	8.3
S1VS05M024F0705	24	12	13	5	+0.012/0	22	14	8	M2.5	8.3
S1VS05M025F0705	25	12.5	13.5	5	+0.012/0	22	14	8	M2.5	8.3
S1VS05M028F0705	28	14	15	5	+0.012/0	22	14	8	M2.5	8.3
S1VS05M030F0705	30	15	16	5	+0.012/0	22	14	8	M2.5	8.3
Fig. 2										
S1VS05M032F0506	32	16	17	6	+0.012/0	15	17	10	M3	11.3
S1VS05M036F0506	36	18	19	6	+0.012/0	15	17	10	M3	11.3
S1VS05M040F0506	40	20	21	6	+0.012/0	15	17	10	M3	11.3
S1VS05M045F0506	45	22.5	23.5	6	+0.012/0	15	17	10	M3	11.3
S1VS05M048F0506	48	24	25	6	+0.012/0	15	17	10	M3	11.3
S1VS05M050F0506	50	25	26	6	+0.012/0	15	17	10	M3	11.3
S1VS05M054F0506	54	27	28	6	+0.012/0	15	17	10	M3	11.3
S1VS05M056F0506	56	28	29	6	+0.012/0	15	17	10	M3	11.3
S1VS05M060F0508	60	30	31	8	+0.015/0	15	17	10	M3	11.3
S1VS05M064F0508	64	32	33	8	+0.015/0	15	17	10	M3	11.3
S1VS05M070F0508	70	35	36	8	+0.015/0	15	17	10	M3	11.3
S1VS05M072F0508	72	36	37	8	+0.015/0	15	17	10	M3	11.3
S1VS05M075F0508	75	37.5	38.5	8	+0.015/0	15	17	10	M3	11.3
S1VS05M080F0510	80	40	41	10	+0.015/0	19	24	14	M4	14
S1VS05M090F0510	90	45	46	10	+0.015/0	19	24	14	M4	14
S1VS05M096F0510	96	48	49	10	+0.015/0	19	24	14	M4	14
S1VS05M100F0510	100	50	51	10	+0.015/0	19	24	14	M4	14
S1VS05M112F0510	112	56	57	10	+0.015/0	19	24	14	M4	14
S1VS05M120F0510	120	60	61	10	+0.015/0	19	24	14	M4	14

I
R
T
1
2
3
4
5
6
7
8
9
10
11
12
13
14
15
A